

FAIRWAY PINES

2011 Proposed Sidewalk Ramps
(9 TOTAL)

5/3/11

2011 WORK PLAN

- Preventive Maintenance
- Rehabilitation
- Reconstruction



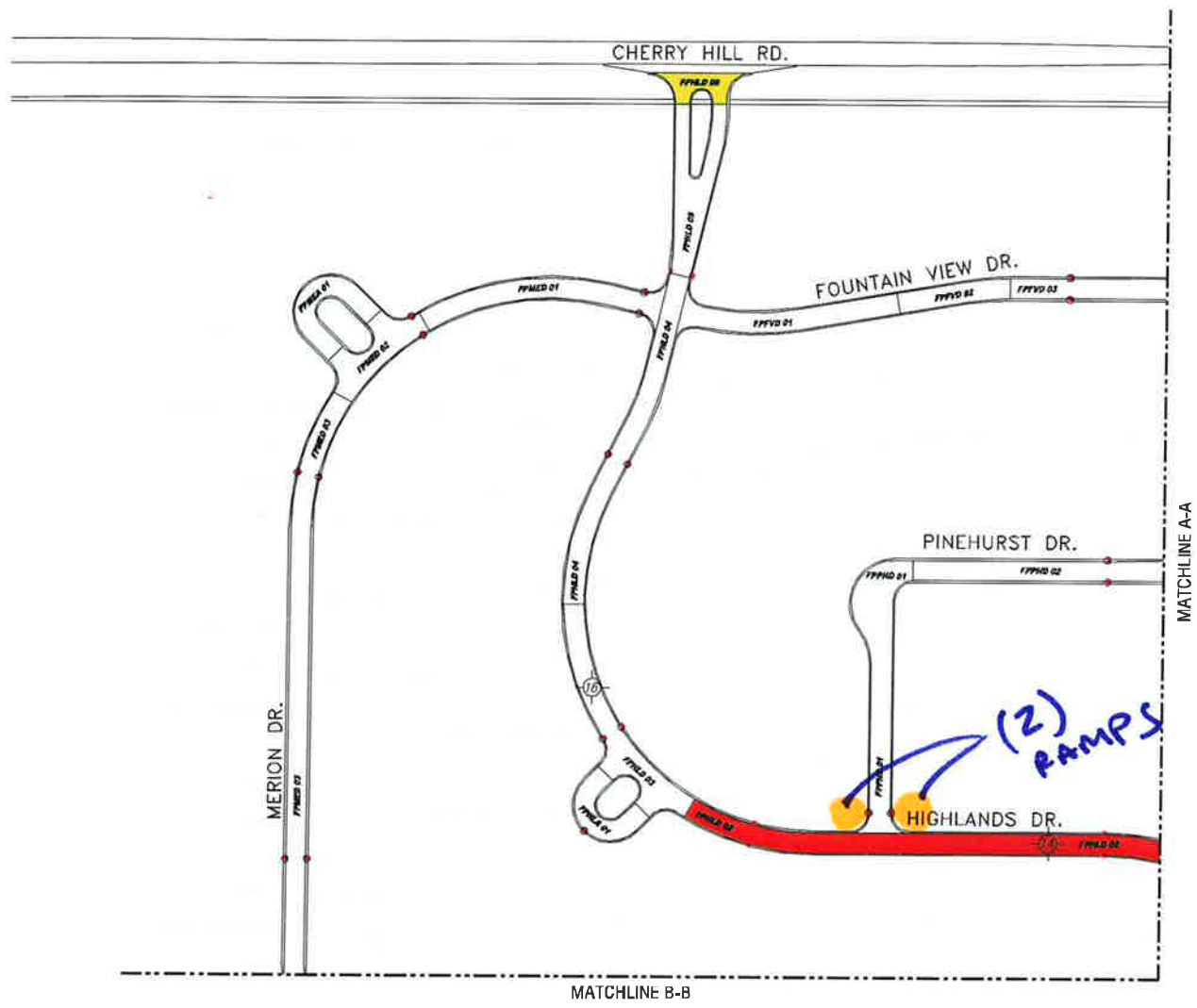
Engineering Consultants
Infrastructure • Land Development • Surveying

230 W. Congress, Suite 400
Doraville, GA 30095
Phone: (770) 447-4500
Fax: (770) 447-4507

805 South Blvd., Suite
Kochmanville, GA 30147
Phone: (770) 447-4500
Fax: (770) 447-4507

10509 Clanton Dr., Suite 600
Birmingham, AL 35244
Phone: (205) 334-1400
Fax: (205) 334-1403

www.sda-eng.com



3 WORKING DAYS BEFORE YOU DIG CALL MISS DIG. 1-800-482-7171

NOTE: ALL INFORMATION ON THIS DRAWING WAS OBTAINED FROM THE RECORD DRAWINGS AND FIELD SURVEY. THE ENGINEER HAS CONDUCTED VISUAL GENERAL VERIFICATION OF THE INFORMATION SHOWN ON THIS DRAWING. THE ENGINEER HAS CONDUCTED VISUAL GENERAL VERIFICATION OF THE INFORMATION SHOWN ON THIS DRAWING. THE ENGINEER HAS CONDUCTED VISUAL GENERAL VERIFICATION OF THE INFORMATION SHOWN ON THIS DRAWING.

PHOENIX ROADWAY MAINTENANCE ASSOCIATION
CANTON, MICHIGAN

2011 PAVEMENT REPAIRS
FAIRWAY PINES
2011 WORK
7 OF 18

NO.	DATE	REVISION

DRAWING SCALE SHOWN VALID ONLY ON 'D' SIZE (24"x36") PLANS
REDUCED PLANS PROVIDED FOR REFERENCE PURPOSES ONLY

DATE	5/3/11
BY	CLT
CHECKED	CLT
SCALE	1" = 60'
PROJECT	2011 PAVEMENT REPAIRS FAIRWAY PINES
SHEET NO.	7 OF 18

2011 WORK PLAN

- Preventive Maintenance
- Rehabilitation
- Reconstruction



Engineering Consultants
Infrastructure • Land Development • Surveying

220 W. Congress, Suite 400
Detroit, MI 48224
Phone: (313) 267-4700
Fax: (313) 267-4707

802 South Wind, Suite
Rockaway, MI, MI 48307
Phone: (248) 644-8400
Fax: (248) 644-5604

11508 Clinton Dr., Suite 400
Birmingham, MI 48412
Phone: (810) 534-1400
Fax: (810) 534-1402
www.sda-eng.com

**3 WORKING DAYS
BEFORE YOU DIG
CALL MISS DIG,
1-800-482-7171**

NOTE: ALL INFORMATION ON THIS DRAWING HAS BEEN OBTAINED FROM RECORD DRAWINGS AND FIELD SURVEY DATA. THE USER OF THIS DRAWING SHALL BE RESPONSIBLE FOR VERIFYING THE ACCURACY OF ALL INFORMATION AND FOR OBTAINING ALL NECESSARY PERMITS AND APPROVALS PRIOR TO CONSTRUCTION.

NOTE: CONTRACTOR SHALL BE RESPONSIBLE FOR OBTAINING ALL NECESSARY PERMITS AND APPROVALS PRIOR TO CONSTRUCTION.

DESIGNED BY: SPALDING DEDECKER ASSOCIATES, INC.
CHECKED BY: SPALDING DEDECKER ASSOCIATES, INC.
DATE: 10/18/11

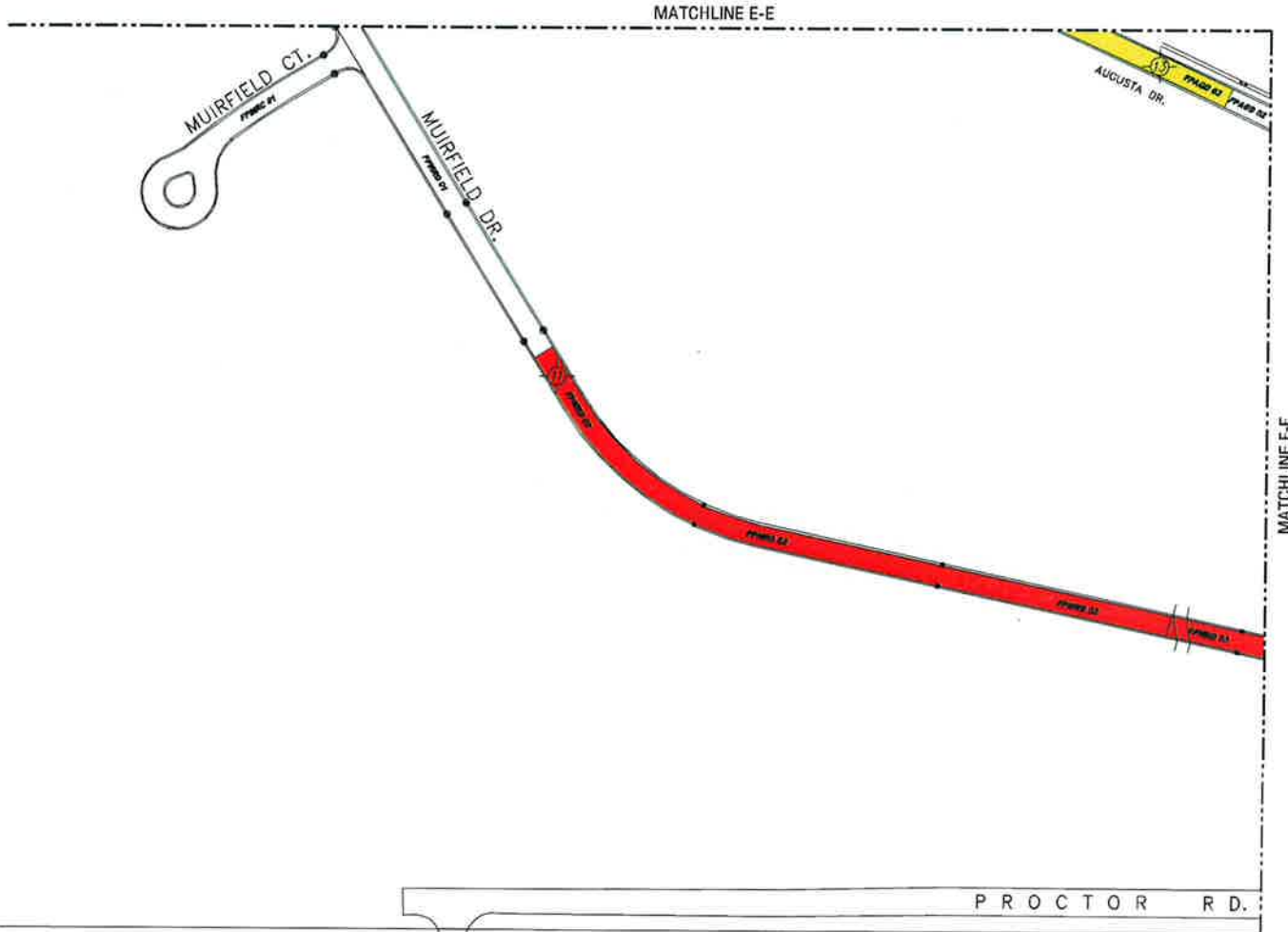
**PHEASANT RUN ROADWAY
MAINTENANCE ASSOCIATION
CANTON, MICHIGAN**

2011 PAVEMENT REPAIRS
FAIRWAY PINES
2011 WORK
10 OF 18

NO.	DATE	REVISION

DRAWING SCALE SHOWN VALID
ONLY ON 'D' SIZE (24"x36") PLANS
REDUCED PLANS PROVIDED FOR
REFERENCE PURPOSES ONLY

NO.	DATE	REVISION



SCALE 1" = 40'

MATCHLINE F-F

MATCHLINE E-E

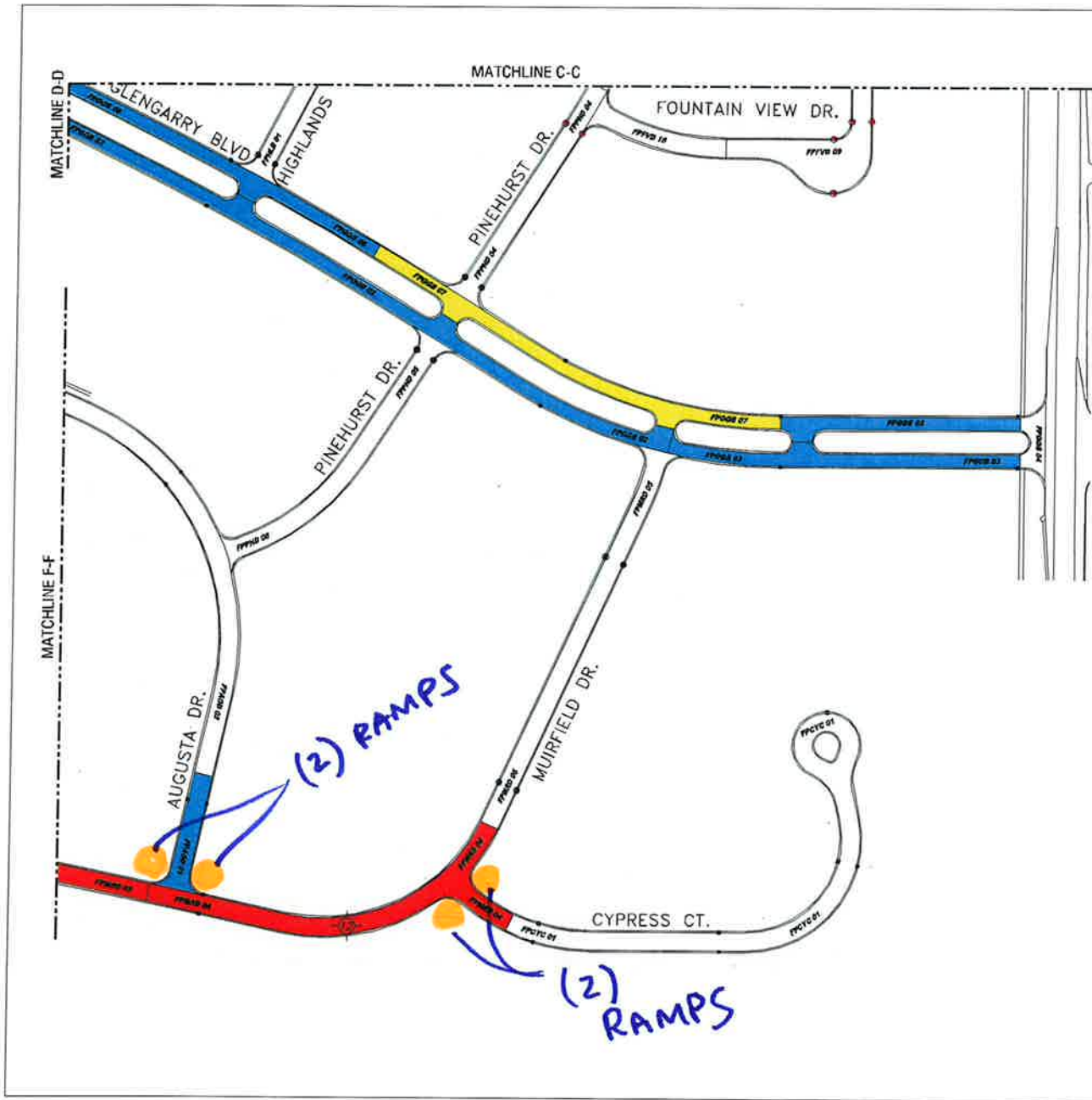
PROCTOR RD.

MUIRFIELD CT.

MUIRFIELD DR.

AUGUSTA DR.

DATE: 10/18/11
BY: SPALDING DEDECKER ASSOCIATES, INC.
PROJECT NUMBER: NP09-010
SHEET NO.: 10 OF 18
SCALE: 1" = 40'



2011 WORK PLAN

- Preventive Maintenance
- Rehabilitation
- Reconstruction



Spalding DeDecker Associates, Inc.

Engineering Consultants
Infrastructure - Land Development - Surveying

230 W. Congress, Suite 400
Dorchester, NJ 08054
Phone: (610) 947-4700
Fax: (610) 947-4707

806 South Blvd., Suite 100
Baltimore, MD, 21207
Phone: (410) 844-8400
Fax: (410) 844-8404

10000 Chestnut Dr., Suite 600
Baltimore, MD 21114
Phone: (410) 334-1400
Fax: (410) 334-1403

www.sda-eng.com

3 WORKING DAYS BEFORE YOU DIE. CALL MISS DE. 1-800-482-7171

NOTE: LEGAL NOTIFICATION OF THIS DRAWING MAY BE GIVEN WITHOUT NOTICE TO THE OWNER BY THE ENGINEER'S OFFICE. THE ENGINEER'S OFFICE AND THE OWNER'S OFFICE SHALL BE RESPONSIBLE FOR THE ACCURACY OF THE INFORMATION PROVIDED HEREON. THE ENGINEER'S OFFICE SHALL BE RESPONSIBLE FOR THE ACCURACY OF THE INFORMATION PROVIDED HEREON. THE ENGINEER'S OFFICE SHALL BE RESPONSIBLE FOR THE ACCURACY OF THE INFORMATION PROVIDED HEREON.

PHEASANT RUN ROADWAY MAINTENANCE ASSOCIATION
CANTON, MICHIGAN

2011 PAVEMENT REPAIRS
FAIRWAY PINES
2011 WORK
11 OF 18

NO.	DATE	REVISION

DRAWING SCALE SHOWN VALID ONLY ON 'D' SIZE (24"x36") PLANS
REDUCED PLANS PROVIDED FOR REFERENCE PURPOSES ONLY

NO.	DATE	REVISION