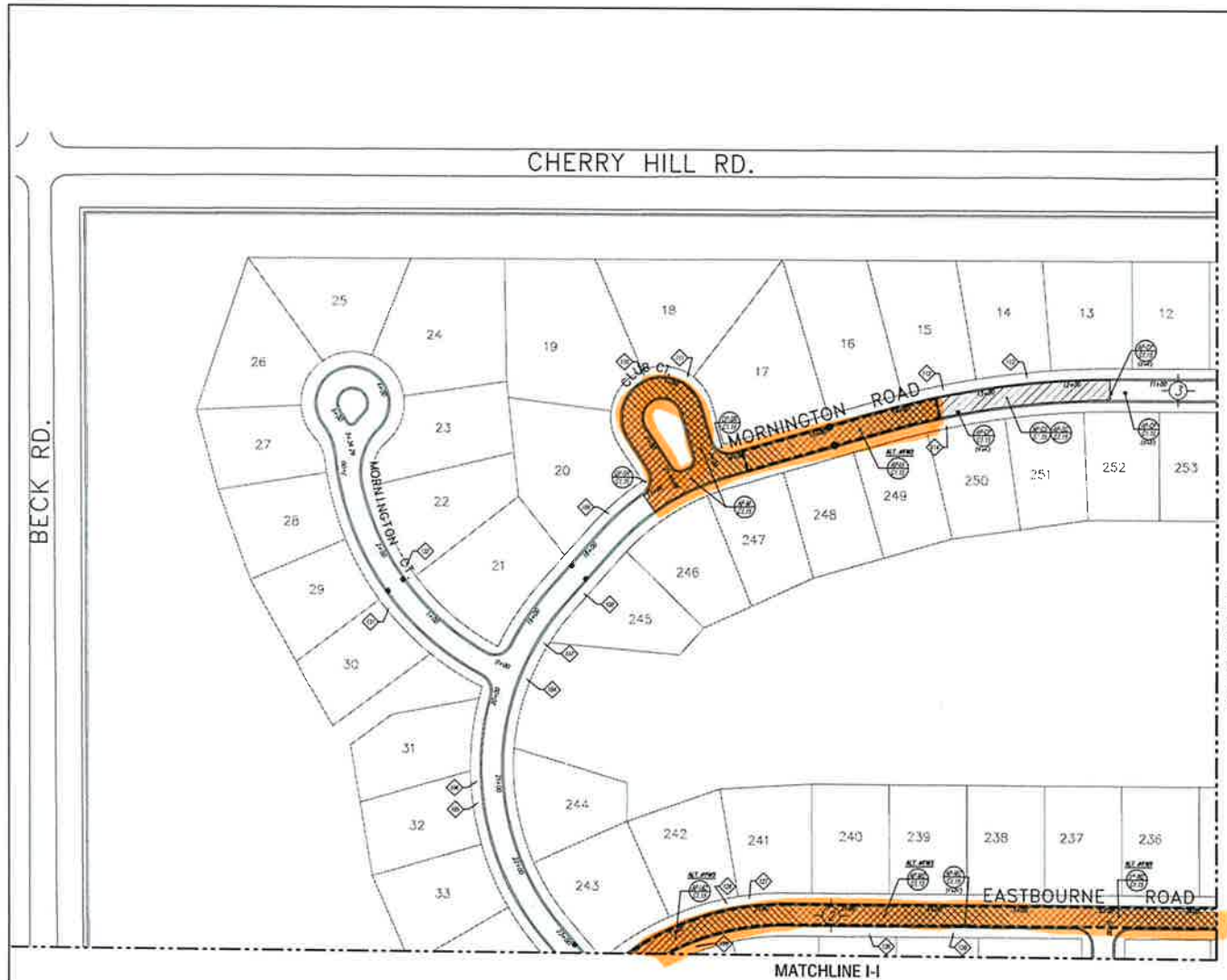


# 2011 Additional CRACK SEAL LOCATIONS [FROM 2010 MILL/PAVE AREAS]



**PROPOSED REPAIRS**

**ASPHALT REPAIRS**

- REINFORCED SEAL COAT
- CRACK SEALING
- MILL AND REPLACE
- CUT AND PATCH

**CONCRETE REPAIRS**

- CRACK/JOINT SEALING
- REMOVE AND REPLACE

**LEGEND**

- EXISTING CATCH BASIN
- INSTALL MEET FLEW
- CONE LOCK RIM
- DETAIL REFERENCE (SEE APPROXIMATE DETAIL SHEET)
- SEWER REFERENCE (SEE SPREAD SHEET FOR DETAILS)

SCALE: 1" = 60'

**ESTIMATED QUANTITIES**

**BASE BID**

|                       |          |
|-----------------------|----------|
| ASPHALT IMPROVEMENTS  | 250 LF   |
| CRACK SEALING         | 4,679 SF |
| SEAL COAT             | 15 SF    |
| CUT AND PATCH         | 4,755 SF |
| 1.5" MILL AND REPLACE | 21 SF    |
| 2.5" MILL AND REPLACE | 0 SF     |

**CONCRETE IMPROVEMENTS**

|  |        |
|--|--------|
| SEWER RAMP REMOVAL AND REPLACEMENT     | 2 EA   |
| SEWER RAMP REMOVAL AND REPLACEMENT     | 242 SF |
| SEWERLY CURBING                        | 24 LF  |
| SEWERLY CURBING                        | 1 EA   |
| CURE AND COVER CURBING AND REPLACEMENT | 0 LF   |

**MISCELLANEOUS IMPROVEMENTS**

|                      |      |
|----------------------|------|
| STRUCTURE ADJUSTMENT | 0 EA |
|----------------------|------|

**ALTERNATE #1102**

|                       |          |
|-----------------------|----------|
| ASPHALT IMPROVEMENTS  | 5,332 SF |
| 1.5" MILL AND REPLACE | 0 SF     |

**ALTERNATE #1103**

|                       |           |
|-----------------------|-----------|
| ASPHALT IMPROVEMENTS  | 13,843 SF |
| 2.5" MILL AND REPLACE | 0 SF      |

NOTE: QUANTITIES FOR WORK AREAS AND LEGEND ARE SHOWN ON PLAN FOR INFORMATION ONLY. QUANTITIES FOR CONTRACTOR TO COMPLETE REPAIRS APPROXIMATE. QUANTITIES ARE APPROXIMATE AND MAY INCREASE OR DECREASE BASED UPON FIELD CONDITIONS AT THE WORKSITE. IN LUMP SUM PRICE CONTRACTOR SHALL COMPLETE ALL WORK WITHIN THE DESIGN BOUNDARIES AND SPECIFICATIONS UNLESS OTHERWISE NOTED ON THE PLAN AS ALLOWANCE WORK.

NOTE: INCIDENTAL CONSTRUCTION TO BE INCLUDED IN PAYMENT FOR LUMP SUM PRICE SHALL INCLUDE FOR EROSION AND SEDIMENTATION CONTROL MEASURES, SIGNAGE, SURVEYS, LANDSCAPING RESTORATION, AND STORMING (WHERE NECESSARY). APPROXIMATE LOCATIONS OF INCIDENTAL CONSTRUCTION ARE SHOWN WHERE APPLICABLE. QUANTITY MAY INCREASE OR DECREASE WHERE FOUND NECESSARY UPON SITE REVIEW WITH DESIGN CONSULTANT.

Spalding DeDecker Associates, Inc.



Engineering Consultants  
Infrastructure • Land Development • Surveying

220 W. Congress, Suite 400  
Canton, MI 48226  
Phone: (313) 967-4700  
Fax: (313) 967-4707

905 South Blvd. East  
Rochester Hills, MI 48307  
Phone: (248) 844-5400  
Fax: (248) 844-5404

10503 Clifton Dr., Suite 600  
Brighton, MI 48116  
Phone: (810) 334-1400  
Fax: (810) 334-1402

www.sda-mg.com

**3 WORKING DAYS BEFORE YOU DIG CALL MISS DIG. 1-800-482-7171**

NOTE: UTILITY INFORMATION ON THIS DRAWING MAY BE FROM INFORMATION OBTAINED TO THE FIRM BY THE VARIOUS UTILITY COMPANIES, GOVERNMENT AGENCIES AND OTHER WRITING SOURCES. UNDERGROUND UTILITIES SHOULD BE THE PROPERTY OF THE UTILITY COMPANY LOCATED UPON A UTILITY COMPANY'S PROVIDED PLAN AND THE LOCATION OF THESE UTILITIES SHOULD BE VERIFIED FROM FIELD SURVEYS, AS APPLICABLE. FROM FIELD SURVEYS, UTILITIES, ETC. AS LOCATED BY THE FIELD SURVEYS SHOULD BE SHOWN TO THE UTILITY COMPANY AS TO THE COMPLETENESS OF ACCURACY THEREOF.

PRIOR TO CONSTRUCTION, ALL LOCATIONS AND DEPTHS OF EXISTING UTILITIES IN CONFLICT WITH PROPOSED IMPROVEMENTS SHALL BE OBTAINED BY THE FIELD CALL MISS DIG 3 WORKING DAYS PRIOR TO CONSTRUCTION.

COPYRIGHT © 2011 SPALDING DEDECKER ASSOCIATES, INC. THIS DRAWING AND THE SUBJECT MATTER CONTAINED THEREIN IS THE PROPERTY OF SPALDING DEDECKER ASSOCIATES, INC. REPRODUCTION WITHOUT WRITTEN PERMISSION OF SPALDING DEDECKER ASSOCIATES, INC.

**PHEASANT RUN ROADWAY MAINTENANCE ASSOCIATION**  
CANTON, MICHIGAN

2010 PAVEMENT REPAIRS FAIRWAYS PAVEMENT REPAIR PLAN  
1 OF 14

| NO. | DATE     | REVISION |
|-----|----------|----------|
| 1   | 05/12/10 | RDS      |

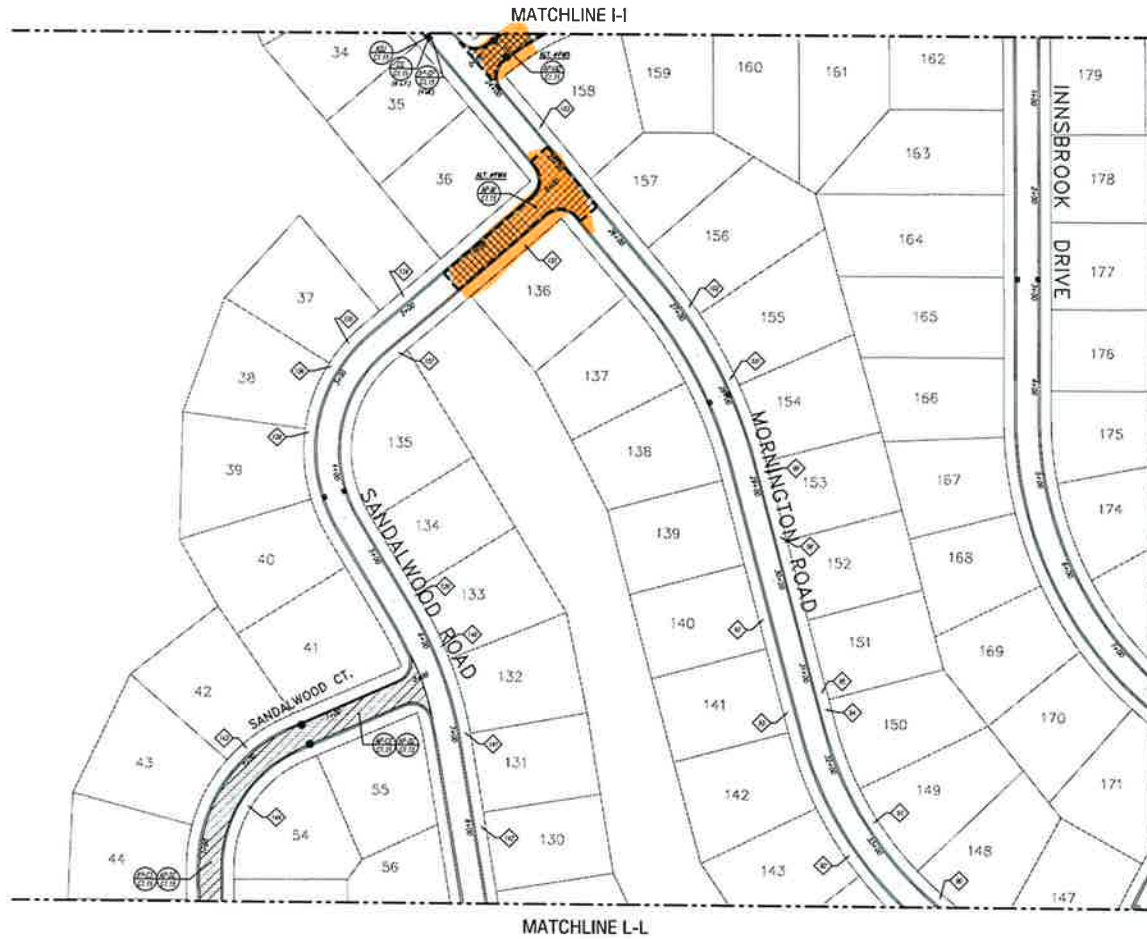
| DESIGNER        | DATE     |
|-----------------|----------|
| T. WILKINSON    | 04-23-10 |
| D. WILKINSON    | 06-23-10 |
| PROJECT MANAGER | 06-02-10 |
| M. BULLON       | 06-02-10 |

DRAWING SCALE SHOWN VALID ONLY ON 'D' SIZE (24"x36") PLANS  
REDUCED PLANS PROVIDED FOR REFERENCE PURPOSES ONLY

SCALE: 1" = 60'  
PROJECT: NP09-010  
SHEET: NP09010 SP



BECK RD.



**PROPOSED REPAIRS**

**ASPHALT REPAIRS**

- SPERMULIST SEAL COAT
- CRACK SEALING
- MILL AND REPLACE
- CUT AND PATCH

**CONCRETE REPAIRS**

- CRACK/JOINT SEALING
- REMOVE AND REPLACE

**LEGEND**

- EXISTING CATCH BASIN
- INSTALL INLET FILTER
- CONCRETE LOCATION
- UTILITY REFERENCE (SEE APPROPRIATE DETAIL SHEET)
- SEWERAGE REFERENCE (SEE SPREAD SHEET FOR DETAILS)



SCALE 1" = 40'

**ESTIMATED QUANTITIES**

**BASE BID**

| ITEM                                    | QUANTITY | UNIT |
|---|----------|------|
| ASPHALT IMPROVEMENTS                    | 888      | LF   |
| CRACK SEALING                           | 6,437    | LF   |
| SEAL COAT                               | 52       | SF   |
| CUT AND PATCH                           | 8        | SF   |
| 1.5" MILL AND REPLACE                   | 8        | SF   |
| 2.5" MILL AND REPLACE                   | 8        | SF   |
| CONCRETE IMPROVEMENTS                   | 0        | EA   |
| SEWERAGE CLEAN REPAIRS AND REPLACEMENT  | 280      | LF   |
| SEWERAGE REPLACEMENT                    | 12       | LF   |
| SEWERAGE CLEANING                       | 7        | EA   |
| CURB AND GUTTER REPAIRS AND REPLACEMENT | 8        | LF   |
| STRUCTURE ADJUSTMENT                    | 1        | EA   |
| ALTERNATE ASPHALT                       |          |      |
| ASPHALT IMPROVEMENTS                    | 1,552    | SF   |
| 2.5" MILL AND REPLACE                   |          |      |
| ALTERNATE ASPHALT                       |          |      |
| ASPHALT IMPROVEMENTS                    | 5,378    | SF   |
| 1.5" MILL AND REPLACE                   |          |      |

**NOTE:** QUANTITIES SHOWN ARE BASED ON PLAN OF CONTRACTOR'S COMPLETE PROPOSED IMPROVEMENTS. QUANTITIES MAY INCREASE OR DECREASE AS THE CONTRACTOR'S FIELD CONDITIONS AT THE TIME OF CONSTRUCTION SHALL COMPLETE AS SHOWN HEREIN. THE CONTRACTOR SHALL VERIFY THE QUANTITIES AND SPECIFICATIONS LISTED (IF ANY) BEFORE ENTERING THE BIDDING AS ALLOWED BY THE SPECIFICATIONS OF THE PROJECT.

**NOTE:** UTILITY INFORMATION ON THIS DRAWING MAY BE FROM INFORMATION OBTAINED FROM THE CITY OF DETROIT, FROM UTILITY COMPANIES, GOVERNMENT AGENCIES AND OTHER VARIOUS SOURCES. UNDISCOVERED UTILITIES SHALL BE THE RESPONSIBILITY OF THE CONTRACTOR. THE CONTRACTOR SHALL VERIFY THE LOCATION, DEPTH AND APPROXIMATE SIZE OF ALL UTILITIES PRIOR TO CONSTRUCTION. THE CONTRACTOR SHALL BE RESPONSIBLE FOR THE LOCATION, DEPTH AND APPROXIMATE SIZE OF ALL UTILITIES PRIOR TO CONSTRUCTION. THE CONTRACTOR SHALL BE RESPONSIBLE FOR THE LOCATION, DEPTH AND APPROXIMATE SIZE OF ALL UTILITIES PRIOR TO CONSTRUCTION.

**NOTE:** INCIDENTAL CONSTRUCTION TO BE INCLUDED IN PAVEMENT REPAIR LAMP SPAN PROJECTS SHALL INCLUDE SOIL EROSION AND STABILIZATION CONTROL, NEIGHBORHOOD-NEED SERVICES, LANDSCAPING RESTORATION, AND STUMPING (WHERE NECESSARY). APPROXIMATE LOCATIONS OF INCIDENTAL CONSTRUCTION ARE SHOWN WHERE APPLICABLE. QUANTITIES MAY INCREASE OR DECREASE WHERE FOUND NECESSARY UPON SITE REVIEW WITH DESIGN CONSULTANT.

**NO. DATE REVISION**

|   |          |      |
|---|----------|------|
| 1 | 05/12/10 | BROS |
|---|----------|------|

**DATE**

|          |          |
|----------|----------|
| DATE     | DATE     |
| 10/23/10 | 10/23/10 |
| 04/22/10 | 04/22/10 |
| 04/22/10 | 04/22/10 |
| 04/22/10 | 04/22/10 |

**DRAWING SCALE SHOWN VALID ONLY ON "D" SIZE (24"x36") PLANS**

**REDUCED PLANS PROVIDED FOR REFERENCE PURPOSES ONLY**

**SCALE**

|          |          |
|----------|----------|
| SCALE    | SCALE    |
| 1" = 80' | 1" = 80' |

**Spalding DeDecker Associates, Inc.**

**Engineering Consultants**  
Infrastructure • Land Development • Surveying

230 W. Congress, Suite 400  
Detroit, MI 48226  
Phone: (313) 967-4700  
Fax: (313) 967-4707

905 South Blvd. East  
Rochester Hills, MI 48307  
Phone: (248) 844-5400  
Fax: (248) 844-5404

10503 Chilton Dr., Suite 600  
Birmingham, MI 48116  
Phone: (810) 534-1400  
Fax: (810) 534-1402

www.sda-eng.com

**3 WORKING DAYS BEFORE YOU DIG CALL MISS DIG. 1-800-482-7171**

**NOTE:** UTILITY INFORMATION ON THIS DRAWING MAY BE FROM INFORMATION OBTAINED FROM THE CITY OF DETROIT, FROM UTILITY COMPANIES, GOVERNMENT AGENCIES AND OTHER VARIOUS SOURCES. UNDISCOVERED UTILITIES SHALL BE THE RESPONSIBILITY OF THE CONTRACTOR. THE CONTRACTOR SHALL VERIFY THE LOCATION, DEPTH AND APPROXIMATE SIZE OF ALL UTILITIES PRIOR TO CONSTRUCTION. THE CONTRACTOR SHALL BE RESPONSIBLE FOR THE LOCATION, DEPTH AND APPROXIMATE SIZE OF ALL UTILITIES PRIOR TO CONSTRUCTION.

**PHEASANT RUN ROADWAY MAINTENANCE ASSOCIATION**  
CANTON, MICHIGAN

2010 PAVEMENT REPAIRS  
FAIRWAYS  
PAVEMENT REPAIR PLAN  
3 OF 14

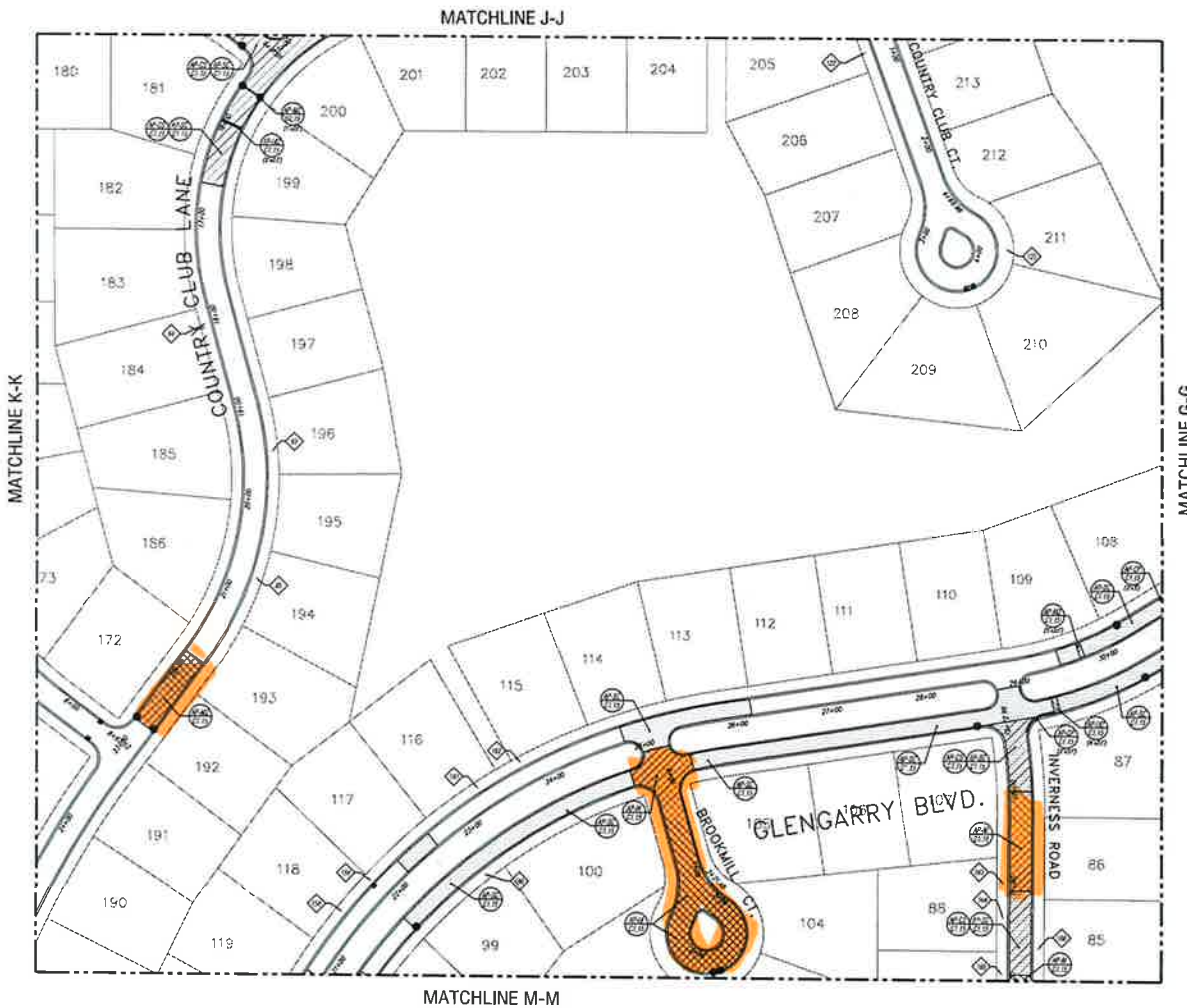
|     |          |          |
|-----|----------|----------|
| NO. | DATE     | REVISION |
| 1   | 05/12/10 | BROS     |

**DATE**

|          |          |
|----------|----------|
| DATE     | DATE     |
| 10/23/10 | 10/23/10 |
| 04/22/10 | 04/22/10 |
| 04/22/10 | 04/22/10 |
| 04/22/10 | 04/22/10 |

**SCALE**

|          |          |
|----------|----------|
| SCALE    | SCALE    |
| 1" = 80' | 1" = 80' |



**PROPOSED REPAIRS**

**ASPHALT PAVEMENT**

- RTPA/ANVUS SEAL COAT
- CRACK SEALING
- MILL AND REPLACE
- CHIP AND PATCH

**CONCRETE PAVEMENT**

- CRACK/JOINT SEALING
- REMOVE AND REPLACE

**LEGEND**

- EXISTING CATCH BASIN
- INSTALL INLET FLEX
- COPE LOCATION
- DETAIL REFERENCE (SEE APPROXIMATE DETAIL SHEET)
- SIDEWALK REFERENCE (SEE SPREAD SHEET FOR DETAILS)

SCALE 1" = 60'

**ESTIMATED QUANTITIES**

| BASE BID                               |           |
|--|-----------|
| <b>ASPHALT IMPROVEMENTS</b>            |           |
| CRACK SEALING                          | 800 LF    |
| SEAL COAT                              | 26,000 SF |
| CHIP AND PATCH                         | 48 SF     |
| 1.5" MILL AND REPLACE                  | 15,770 SF |
| 2.5" MILL AND REPLACE                  | 2,888 SF  |
| <b>CONCRETE IMPROVEMENTS</b>           |           |
| SIDEWALK CRACK REPAIR AND REPLACEMENT  | 0 EA      |
| SIDEWALK REPAIR AND REPLACEMENT        | 400 SF    |
| SIDEWALK CRACKING                      | 4 LF      |
| SIDEWALK LEVELING                      | 5 EA      |
| CURB AND GUTTER REPAIR AND REPLACEMENT | 0 LF      |
| <b>MISCELLANEOUS ADJUSTMENTS</b>       |           |
| STRUCTURE ADJUSTMENT                   | 0 CA      |

**NOTE:** INCIDENTAL CONSTRUCTION TO BE INCLUDED IN PAYMENT BEYOND LUMP SUM PRICES SHALL INCLUDE JOB PROTECTION AND DOCUMENTATION CONTROL MEASURES, AUDIO-VISUAL SURVEYS, LANDSCAPING RESTORATION, AND STOPPING (WHERE NECESSARY). APPROXIMATE LOCATIONS OF INCIDENTAL CONSTRUCTION ARE SHOWN WHERE APPLICABLE. QUANTITY MAY INCREASE OR DECREASE WHERE FOUND NECESSARY UPON SITE REVIEW IN THE DESIGN CONSTRUCTION PHASE.

Spalding DeDecker Associates, Inc.



Engineering Consultants  
Infrastructure - Land Development - Surveying

220 W. Congress, Suite 400  
Detroit, MI 48226  
Phone: (313) 967-4700  
Fax: (313) 967-4707

905 South Blvd. East  
Rochester Hills, MI 48307  
Phone: (248) 844-5400  
Fax: (248) 844-5404

10503 Chilton Dr., Suite 600  
Brighton, MI 48116  
Phone: (810) 334-1400  
Fax: (810) 334-1402

www.sda-eng.com

**3 WORKING DAYS BEFORE YOU DIG CALL MISS DIG. 1-800-482-7171**

**NOTE:** UTILITIES INFORMATION FOR THIS DRAWING WAS OBTAINED FROM INFORMATION PROVIDED TO THE FIRM BY THE LOCAL UTILITY COMPANIES. CITY, COUNTY, STATE, AND OTHER VARIOUS SERVICES, UNDERGROUND UTILITIES, AND OTHER PUBLIC UTILITIES ARE LOCATED AND IDENTIFIED ON THE PLANS. THE LOCATION OF ANY OTHER UTILITIES NOT INDICATED ON A UTILITY COMPANY'S PUBLISHED PLANS, SUCH AS UTILITIES OF HOMEOWNERS, ARE APPROXIMATE TO THE FIRM'S BEST KNOWLEDGE AND BELIEF. THE FIRM DOES NOT WARRANT THE ACCURACY OF SUCH INFORMATION. THE USER OF THIS DRAWING SHALL BE RESPONSIBLE FOR VERIFYING THE LOCATION AND DEPTH OF ALL UTILITIES TO BE EXCAVATED OR ADJACENT THEREOF.

**NOTE:** PRIOR TO CONSTRUCTION, ALL LOCATIONS AND DEPTHS OF EXISTING UTILITIES TO BE EXCAVATED OR ADJACENT THEREOF SHALL BE VERIFIED BY THE FIELD. CALL MISS DIG 3 WORKING DAYS PRIOR TO CONSTRUCTION.

**DISCLAIMER:** © 2010 PHEASANT RUN ROADWAY MAINTENANCE ASSOCIATION. THIS DRAWING AND THE SUBJECT MATTER CONTAINED HEREIN IS PROPRIETARY AND IS NOT TO BE USED OR REPRODUCED WITHOUT WRITTEN PERMISSION OF PHEASANT RUN ROADWAY MAINTENANCE ASSOCIATION.

**PHEASANT RUN ROADWAY MAINTENANCE ASSOCIATION**  
CANTON, MICHIGAN

2010 PAVEMENT REPAIRS  
FAIRWAYS  
PAVEMENT REPAIR PLAN  
4 OF 14

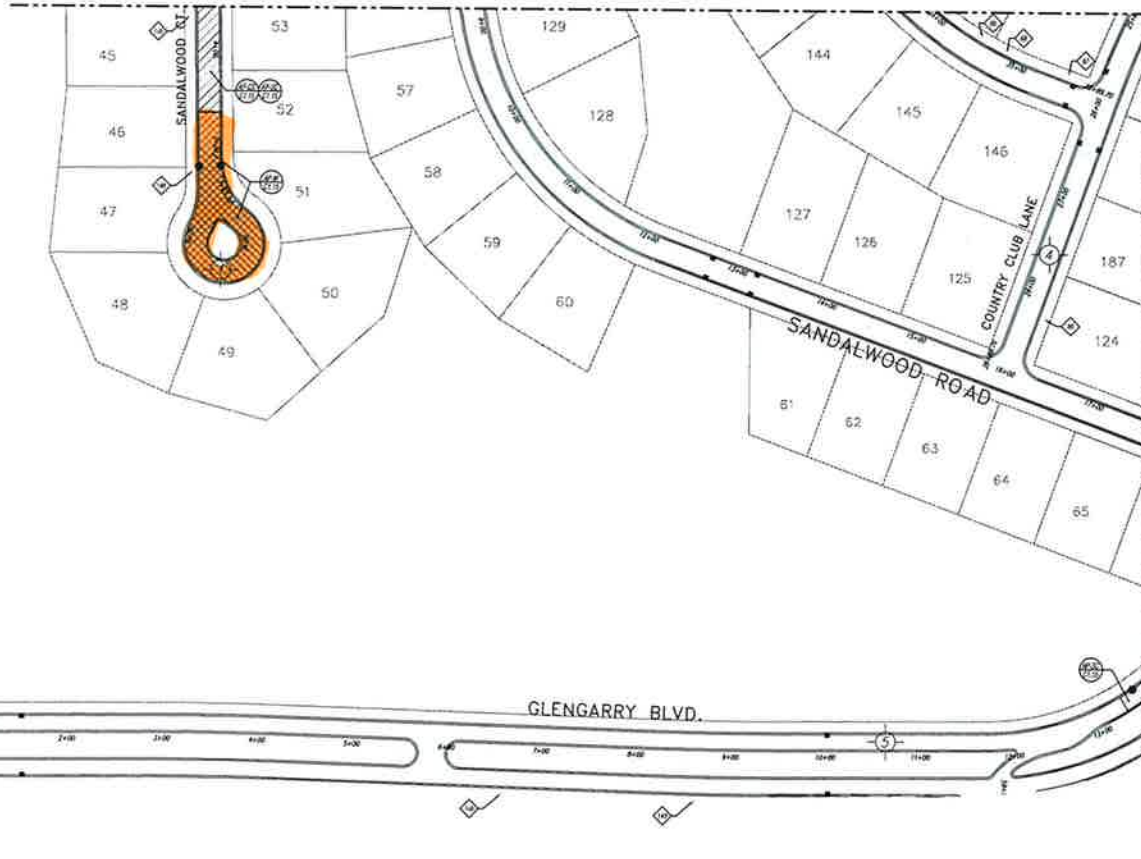
| NO. | DATE     | REVISION |
|-----|----------|----------|
| 1   | 05/12/10 | BIDS     |

| DESIGNER        | DATE          |
|-----------------|---------------|
| P. TILWANGAS    | 04-23-10      |
| P. TILWANGAS    | 04-23-10      |
| PROJECT MANAGER | NO. FROM DATE |
| M. BALON        | 00-00-00      |

DRAWING SCALE SHOWN VALID ONLY ON 'D' SIZE (24"x36") PLANS  
REDUCED PLANS PROVIDED FOR REFERENCE PURPOSES ONLY  
1" = 60'

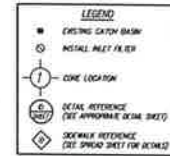
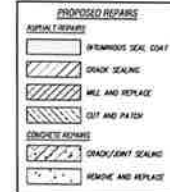
BECK RD.

MATCHLINE L-L



MATCHLINE N-N

SUMMIT PKWY



SCALE 1" = 40'

**ESTIMATED QUANTITIES**

**BASE BID**

|                       |         |
|-----------------------|---------|
| ASPHALT IMPROVEMENTS  | 200 LF  |
| CRACK SEALING         | 1000 LF |
| SEAL COAT             | 1000 SF |
| CUT AND PATCH         | 0 SF    |
| 1.5" MILL AND REPLACE | 5900 SF |
| 2.5" MILL AND REPLACE | 0 SF    |

**CONCRETE IMPROVEMENTS**

|   |        |
|---|--------|
| SECTIONAL RAMP REMOVAL AND REPLACEMENT  | 0 CA   |
| SECTIONAL REMOVAL AND REPLACEMENT       | 270 SF |
| SECTIONAL CURBING                       | 16 LF  |
| SECTIONAL CURBING                       | 1 CA   |
| CURB AND GUTTER REMOVAL AND REPLACEMENT | 0 LF   |

**ACCESSORY IMPROVEMENTS**

|                      |      |
|----------------------|------|
| STRUCTURE ADJUSTMENT | 0 CA |
|----------------------|------|

**NOTE:** INCIDENTAL CONSTRUCTION TO BE INCLUDED IN PAVERMENT REPAIRS (E.G. CURB, GUTTER, SIDEWALK, ETC.) SHALL BE INCLUDED IN THE ESTIMATED QUANTITIES. QUANTITIES AND APPROXIMATE COSTS ARE BASED ON THE ASSUMPTIONS AND CONDITIONS LISTED HEREIN. CONTRACTOR SHALL VERIFY ALL CONDITIONS AND APPROXIMATE COSTS PRIOR TO CONSTRUCTION. APPROXIMATE LOCATIONS OF INCIDENTAL CONSTRUCTION ARE SHOWN WHERE APPROPRIATE. QUANTITIES MAY INCREASE OR DECREASE WHERE FOUND NECESSARY UPON SITE REVIEW AND/OR DESIGN CONSULTANT.

**Spalding DeDecker Associates, Inc.**

Engineering Consultants  
Infrastructure • Land Development • Surveying

220 W. Congress, Suite 400  
Detroit, MI 48226  
Phone: (313) 967-4700  
Fax: (313) 967-4707

905 South Blvd. East  
Rochester Hills, MI 48307  
Phone: (248) 844-5400  
Fax: (248) 844-5404

10503 Chilton Dr., Suite 600  
Birmingham, MI 48116  
Phone: (810) 534-1400  
Fax: (810) 534-1402

www.sda-eng.com

**3 WORKING DAYS BEFORE YOU DIG CALL MISS DIG. 1-800-482-7171**

**PHASANT RUN ROADWAY MAINTENANCE ASSOCIATION**  
CANTON, MICHIGAN

2010 PAVEMENT REPAIRS  
FAIRWAYS  
PAVEMENT REPAIR PLAN  
5 OF 14

| NO. | DATE     | REVISION |
|-----|----------|----------|
| 1   | 05/12/10 | BIDS     |

| DATE     | BY            |
|----------|---------------|
| 05-22-10 | SP. TILKANKAS |
| 05-23-10 | SP. TILKANKAS |
| 05-23-10 | SP. TILKANKAS |

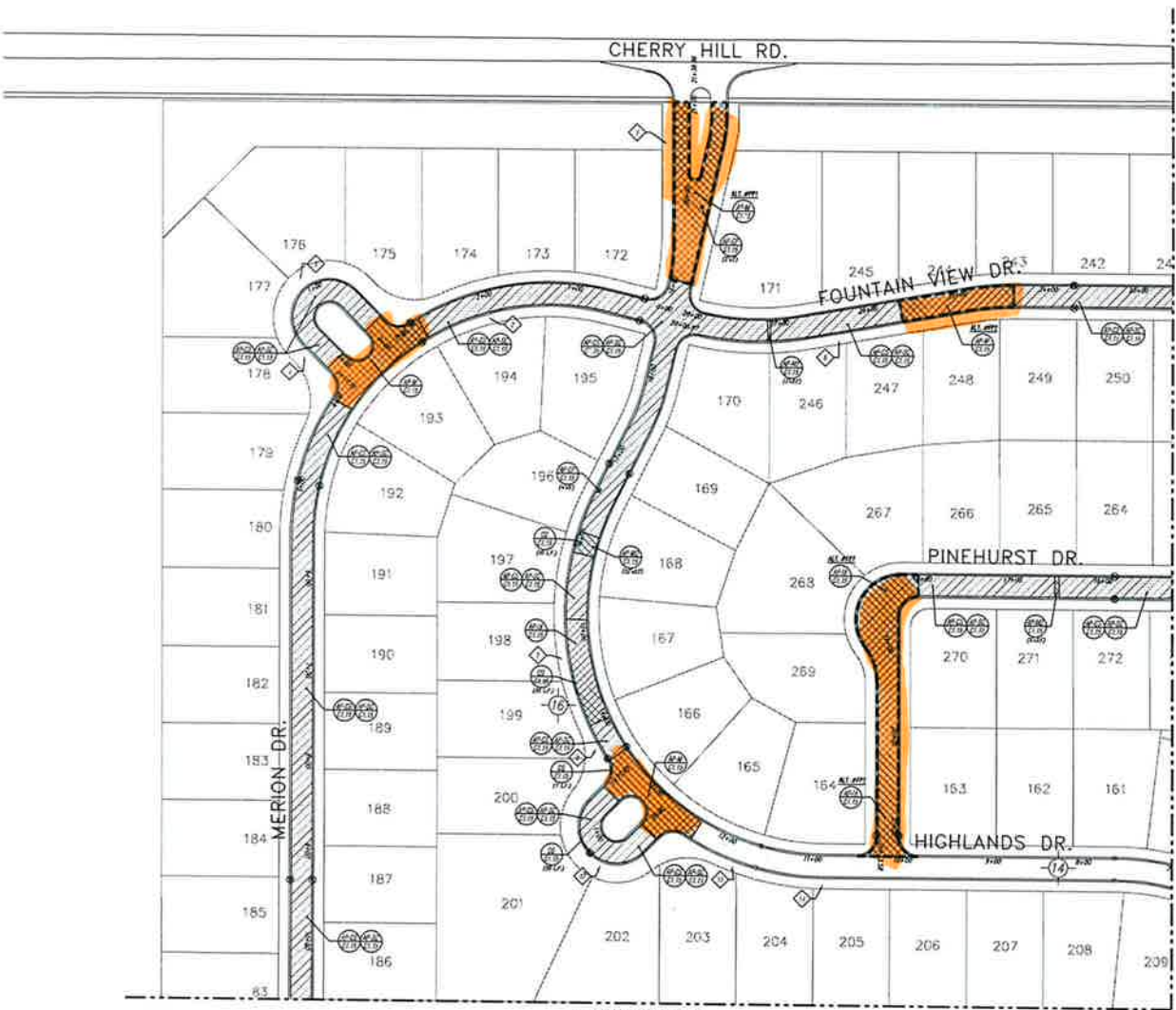
| PROJECT NUMBER | DATE     |
|----------------|----------|
| NP09-010       | 09-09-09 |

| PROJECT NUMBER | DATE     |
|----------------|----------|
| NP09-010       | 09-09-09 |

DRAWING SCALE SHOWN VALID ONLY ON 'D' SIZE (24"x36") PLANS  
REDUCED PLANS PROVIDED FOR REFERENCE PURPOSES ONLY





**PROPOSED REPAIRS**

**ASPHALT REPAIRS**

- BRIMMUS SEAL COAT
- CRACK SEALING
- WELL AND REPLACE
- CUT AND PATCH

**CONCRETE REPAIRS**

- CRACK/JOINT SEALING
- REPLACE AND REPLACE

**LEGEND**

- EXISTING CATCH BASIN
- INSTALL ALLEY FILTER
- CORE LOCATION
- DETAIL REFERENCE (SEE APPROPRIATE SCALE SHEET)
- SEWALK REFERENCE (SEE SPREAD SHEET FOR DETAILS)



**ESTIMATED QUANTITIES**

| BASE BID             | QUANTITY  |
|----------------------|-----------|
| ASPHALT IMPROVEMENTS |           |
| BRIMMUS SEAL COAT    | 2,300 LF  |
| CRACK SEALING        | 10,000 SF |
| CUT AND PATCH        | 18 SF     |
| 1.5\"/>              |           |

**CONCRETE IMPROVEMENTS**

- SEWERLINE SHARP REPAIRS AND REPLACEMENT: 0 EA
- SEWERLINE REPAIRS AND REPLACEMENT: 244 SF
- SEWERLINE CONCRETE: 0 LF
- SEWERLINE SEALING: 2 EA
- CURB AND GUTTER REMOVAL AND REPLACEMENT: 57 LF

**WELL/ALLEY IMPROVEMENTS**

- STRUCTURE RELOCATION: 0 EA

**ALTERNATE #111**

**ASPHALT IMPROVEMENTS**

- 1.5\"/>

**ALTERNATE #112**

**ASPHALT IMPROVEMENTS**

- 1.5\"/>

**ALTERNATE #117**

**ASPHALT IMPROVEMENTS**

- 1.5\"/>

**NOTE:** RESIDENTIAL CONSTRUCTION TO BE INCLUDED IN PREVIOUS REPAIR LUMP SUM PRICES SHALL INCLUDE SOIL EROSION AND STABILIZATION CONTROL MEASURES, MOON-VIDEO SURVEYS, LANDSCAPING RESTORATION, AND SIGNING (WHEN NECESSARY).

**APPROXIMATE LOCATIONS OF INCIDENTAL CONSTRUCTION ARE SHOWN WHERE APPLICABLE. QUANTITY MAY INCREASE OR DECREASE BASED UPON NECESSARY LUMP SUM REVIEW WITH DESIGN CONSULTANT.**

**Spalding DeDecker Associates, Inc.**

Engineering Consultants  
Infrastructure • Land Development • Surveying

220 W. Congress, Suite 400  
Detroit, MI 48226  
Phone: (313) 967-4700  
Fax: (313) 967-4707

905 South Blvd., East  
Livonia, MI 48150  
Phone: (248) 844-5400  
Fax: (248) 844-5404

10503 Clanton Dr., Suite 600  
Brighton, MI 48116  
Phone: (810) 534-1400  
Fax: (810) 534-1402

www.sda-eng.com

**3 WORKING DAYS BEFORE YOU DIG CALL MISS DIG. 1-800-482-7171**

**NOTE:** UTILITY INFORMATION ON THIS DRAWING MAY BE FROM INFORMATION OBTAINED TO DATE FROM THE HARBOR UTILITY COMPANY, CITY COUNTY KODOLTS AND OTHER UTILITY COMPANIES. UNDEGROUND UTILITIES SHOWN ON THIS DRAWING ARE NOT GUARANTEED TO BE ACCURATE. CONTRACTOR SHALL VERIFY ALL UTILITIES PRIOR TO CONSTRUCTION. MISS DIG IS A SERVICE PROVIDED BY THE STATE OF MICHIGAN TO ASSIST HOMEOWNERS AND CONTRACTORS IN IDENTIFYING AND MARKING UTILITIES PRIOR TO CONSTRUCTION. MISS DIG IS NOT A SERVICE PROVIDED BY SPALDING DEDECKER ASSOCIATES, INC.

**PHEASANT RUN ROADWAY MAINTENANCE ASSOCIATION**  
CANTON, MICHIGAN

2010 PAVEMENT REPAIRS  
FAIRWAYS  
PAVEMENT REPAIR PLAN  
7 OF 14

| NO. | DATE     | REVISION |
|-----|----------|----------|
| 1   | 05/12/10 | ROS      |

| DESIGNER     | DATE     |
|--------------|----------|
| D. TULKANGAS | 04-22-10 |
| D. TULKANGAS | 04-22-10 |
| D. TULKANGAS | 04-22-10 |

DRAWING SCALE SHOWN VALID ONLY ON 'D' SIZE (24"x36") PLANS

REDUCED PLANS PROVIDED FOR REFERENCE PURPOSES ONLY

| NO. | DATE     | REVISION |
|-----|----------|----------|
| 1   | 05/12/10 | ROS      |





220 W. Congress, Suite 400  
Detroit, MI 48226  
Phone: (313) 967-4700  
Fax: (313) 967-4707

905 South Blvd. East  
Rochester Hills, MI 48307  
Phone: (248) 844-3400  
Fax: (248) 844-3404

10503 Chilton Dr., Suite 600  
Brighton, MI 48116  
Phone: (810) 534-1400  
Fax: (810) 534-1402

www.sda-eng.com

3 WORKING DAYS  
BEFORE YOU DIG  
CALL MISS DIG.  
1-800-482-7171  
By the Michigan Department of Transportation

NOTE: UTILITY INFORMATION ON THIS DRAWING MAY BE FIELD INFORMATION OBTAINED TO THE FIRM BY THE ARCHITECT, ENGINEER, SURVEYOR, PROFESSIONAL UTILITY DESIGNER, CITY ENGINEER, CITY/TOURISM ASSOCIATES WHICH ARE ON THESE PERMITS ARE SUBJECT TO THE BELIEF OF THE UTILITY COMPANY'S PUBLISHED PLANS. THE LOCATION OF WORK SHOWN ON THIS DRAWING IS APPROXIMATE TO THE LOCATION OF THE UTILITY AS SHOWN ON THESE PLANS. THE ARCHITECT, ENGINEER, SURVEYOR, PROFESSIONAL UTILITY DESIGNER, CITY ENGINEER, CITY/TOURISM ASSOCIATES SHALL BE RESPONSIBLE FOR VERIFYING THE LOCATION OF THE UTILITY AS SHOWN ON THESE PLANS PRIOR TO CONSTRUCTION.

PRIOR TO CONSTRUCTION ALL LOCATIONS AND DEPTHS OF EXISTING UTILITIES TO BE EXPOSED AND REPAIRED SHALL BE VERIFIED IN THE FIELD. THE ARCHITECT, ENGINEER, SURVEYOR, PROFESSIONAL UTILITY DESIGNER, CITY ENGINEER, CITY/TOURISM ASSOCIATES SHALL BE RESPONSIBLE FOR VERIFYING THE LOCATION OF THE UTILITY AS SHOWN ON THESE PLANS PRIOR TO CONSTRUCTION.

Copyright © 2010 Spalding DeDecker Associates, Inc. This drawing and the subject matter contained hereon are the property of Spalding DeDecker Associates, Inc. and shall not be used or reproduced without written permission of Spalding DeDecker Associates, Inc.

PHEASANT RUN ROADWAY  
MAINTENANCE ASSOCIATION  
CANTON, MICHIGAN

2010 PAVEMENT REPAIRS  
FAIRWAYS  
PAVEMENT REPAIR PLAN  
9 OF 14

| NO. | DATE     | REVISION |
|-----|----------|----------|
| 1   | 05/12/10 | BOS      |

| NO. | DATE     | REVISION |
|-----|----------|----------|
| 1   | 05/12/10 | BOS      |

| NO. | DATE     | REVISION |
|-----|----------|----------|
| 1   | 05/12/10 | BOS      |

| NO. | DATE     | REVISION |
|-----|----------|----------|
| 1   | 05/12/10 | BOS      |

| NO. | DATE     | REVISION |
|-----|----------|----------|
| 1   | 05/12/10 | BOS      |

**PROPOSED REPAIRS**

| ASPHALT REPAIRS  |                      |
|------------------|----------------------|
| [Symbol]         | BITUMINOUS SEAL COAT |
| [Symbol]         | CRACK SEALING        |
| [Symbol]         | MILL AND REPLACE     |
| [Symbol]         | CUT AND PATCH        |
| CONCRETE REPAIRS |                      |
| [Symbol]         | CRACK/JOINT SEALING  |
| [Symbol]         | REMOVE AND REPLACE   |

**LEGEND**

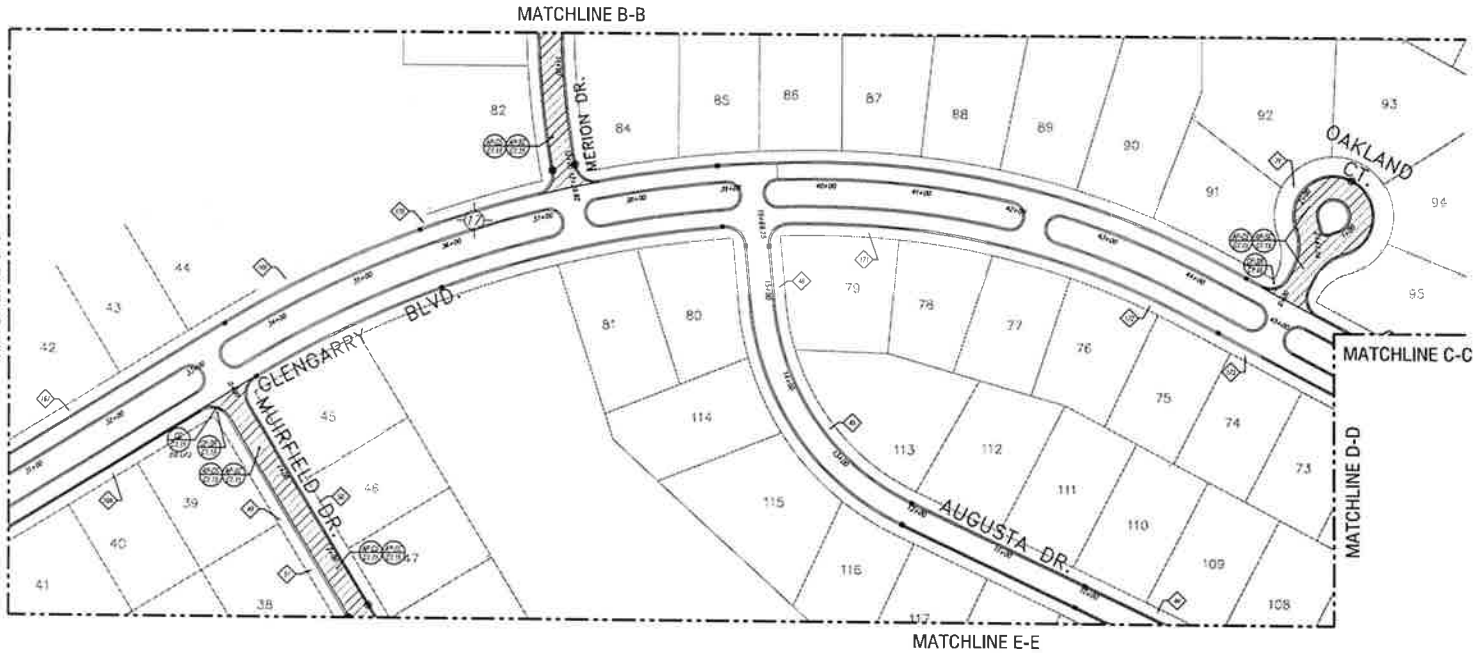
|          |   |
|----------|---|
| [Symbol] | EXISTING CATCH BASIN                            |
| [Symbol] | INSTALL BEST PRACTICE                           |
| [Symbol] | COKE LOCATION                                   |
| [Symbol] | DETAIL REFERENCE (SEE APPROPRIATE DETAIL SHEET) |
| [Symbol] | SEWALK REFERENCE (SEE SPREAD SHEET FOR DETAILS) |

SCALE: 1" = 40'

**ESTIMATED QUANTITIES**

| BASE BID                                |           |
|---|-----------|
| ASPHALT IMPROVEMENTS                    | 200 LF    |
| CRACK SEALING                           | 18,000 SF |
| CUT AND PATCH                           | 0 SF      |
| 1.5" MILL AND REPLACE                   | 0 SF      |
| 2.5" MILL AND REPLACE                   | 0 SF      |
| CONCRETE IMPROVEMENTS                   |           |
| SEWALK TRAMP REMOVAL AND REPLACEMENT    | 2 EA      |
| SEWALK REMOVAL AND REPLACEMENT          | 540 SF    |
| SEWALK CRACKING                         | 4 LF      |
| SEWALK LEVELING                         | 2 EA      |
| GUMP AND GUTTER REMOVAL AND REPLACEMENT | 12 LF     |
| METALLURGY IMPROVEMENTS                 |           |
| STRUCTURE ADJUSTMENT                    | 0 CA      |

NOTE: INCIDENTAL CONSTRUCTION TO BE INCLUDED IN PAVEMENT REPAIR LUMP SUM PRICES SHALL INCLUDE SOIL EROSION AND SEDIMENTATION CONTROL MEASURES, MOUND-NEED SURVEYS, LANDSCAPING RESTORATION AND STOPPING (WHERE NECESSARY). APPROXIMATE LOCATIONS OF INCIDENTAL CONSTRUCTION ARE SHOWN WHERE APPROPRIATE. QUANTITY MAY INCREASE OR DECREASE WHERE FOUND NECESSARY UPON SITE REVIEW WITH DESIGN CONSULTANT.



DRAWING SCALE SHOWN VALID ONLY ON 'D' SIZE (24"x36") PLANS  
REDUCED PLANS PROVIDED FOR REFERENCE PURPOSES ONLY

DATE: 05/12/10  
DRAWN BY: P. TULKANGAS  
CHECKED BY: S. TULKANGAS  
PROJECT NUMBER: M. BALDI  
CONTRACT NUMBER: 00-00-00  
SHEET: 9 OF 14

MATCHLINE E-E



**PROPOSED REPAIRS**

**ASPHALT REPAIRS**

- CONTINUOUS SEAL COAT
- CRACK SEALING
- MILL AND REPLACE
- CUT AND PATCH

**CONCRETE REPAIRS**

- CRACK/JOINT SEALING
- REMOVE AND REPLACE

**LEGEND**

- EXISTING CATCH BASIN
- INSTALL INLET PIPE
- CONE LOCATION
- DETAIL REFERENCE (SEE APPROPRIATE DETAIL SHEET)
- SIDEWALK REFERENCE (SEE SPREAD SHEET FOR DETAILS)

SCALE: 1" = 40'

**ESTIMATED QUANTITIES**

| BASE BID                                |           |
|---|-----------|
| <b>ASPHALT IMPROVEMENTS</b>             |           |
| CRACK SEALING                           | 1,100 LF  |
| SEAL COAT                               | 20,000 SF |
| CUT AND PATCH                           | 500 SF    |
| 1.5" MILL AND REPLACE                   | 0 SF      |
| 2.5" MILL AND REPLACE                   | 0 SF      |
| <b>CONCRETE IMPROVEMENTS</b>            |           |
| SIDEWALK REPAIR REMOVAL AND REPLACEMENT | 0 EA      |
| SIDEWALK REMOVAL AND REPLACEMENT        | 220 SF    |
| SIDEWALK GRINDING                       | 0 LF      |
| SIDEWALK LEVELING                       | 1 EA      |
| CURS AND GUTTER REMOVAL AND REPLACEMENT | 28 LF     |
| <b>MISCELLANEOUS IMPROVEMENTS</b>       |           |
| STRUCTURE ADJUSTMENT                    | 0 CA      |

**NOTE:** ACCIDENTAL CONSTRUCTION TO BE INCLUDED IN PAVEMENT REPAIRS (LAMP LOW PRICES) SHALL INCLUDE SIDE EROSION AND DOCUMENTATION CONTROL MEASURES, ADDITIONAL SURVEYS, LANDSCAPING RESTORATION, AND STIRRING (WHERE NECESSARY).

**APPROXIMATE** LOCATIONS OF ACCIDENTAL CONSTRUCTION ARE SHOWN WHERE APPROPRIATE. QUANTITIES MAY INCREASE OR DECREASE WHERE FOUND NECESSARY UPON SITE REVIEW WITH DESIGN CONSULTANT.

**Spalding DeDecker Associates, Inc.**

Engineering Consultants  
Infrastructure • Land Development • Surveying

220 W. Congress, Suite 400  
Detroit, MI 48226  
Phone: (313) 967-4700  
Fax: (313) 967-4707

905 South Blvd. East  
Kochester Hills, MI 48307  
Phone: (248) 944-5400  
Fax: (248) 944-5404

10503 Clanton Dr., Suite 400  
Birmingham, MI 48116  
Phone: (810) 534-1400  
Fax: (810) 534-1402

www.sda-eng.com

**3 WORKING DAYS BEFORE YOU DIG CALL MISS DIG. 1-800-482-7171**

**NOTE:** UTILITY INFORMATION ON THIS DRAWING MAY BE FROM INFORMATION OBTAINED TO THE BEST OF OUR KNOWLEDGE FROM PUBLIC RECORDS, CITY/STATE RECORDS, AND OTHER VARIOUS SOURCES. UNDISCOVERED UTILITIES WHICH ARE NOT PUBLIC RECORDS WILL BE LOCATED UPON A UTILITY COMPANY'S PUBLISHED PLANS. THE LOCATION OF UTILITIES FROM THE SURFACE ARE APPROXIMATE TO THE FIELD SURVEY DATA. THE UTILITY INFORMATION IS GIVEN AS TO THE BEST OF OUR KNOWLEDGE AND BELIEF.

**NOTE:** PRIOR TO CONSTRUCTION, ALL LOCATIONS AND DEPTHS OF EXISTING UTILITIES IN CONTACT WITH PROPOSED IMPROVEMENTS SHALL BE VERIFIED IN THE FIELD. CALL AND DIG A WORKING DAYS PRIOR TO CONSTRUCTION.

**COPYRIGHT © 2010 SPALDING DEDECKER ASSOCIATES, INC. ALL RIGHTS RESERVED. NO PART OF THIS DRAWING OR INFORMATION HEREON MAY BE REPRODUCED OR TRANSMITTED IN ANY FORM OR BY ANY MEANS, ELECTRONIC OR MECHANICAL, INCLUDING PHOTOCOPYING, RECORDING, OR BY ANY INFORMATION STORAGE AND RETRIEVAL SYSTEM, WITHOUT THE WRITTEN PERMISSION OF SPALDING DEDECKER ASSOCIATES, INC.**

**PHEASANT RUN ROADWAY MAINTENANCE ASSOCIATION**  
CANTON, MICHIGAN

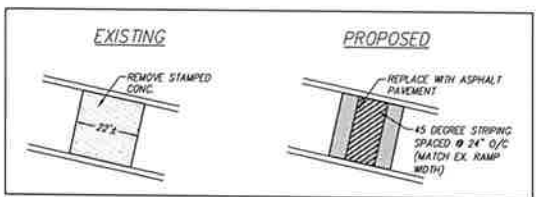
2010 PAVEMENT REPAIRS  
FAIRWAYS  
PAVEMENT REPAIR PLAN  
10 OF 14

| NO. | DATE     | REVISION |
|-----|----------|----------|
| 1   | 05/12/10 | BOS      |

| NO. | DATE     | REVISION |
|-----|----------|----------|
| 1   | 05/12/10 | BOS      |

**DRAWING SCALE SHOWN VALID ONLY ON 'D' SIZE (24"x36") PLANS**

REDUCED PLANS PROVIDED FOR REFERENCE PURPOSES ONLY



**DETAIL B-B**  
SCALE: 1" = 20'

1" = 60' CL10



**PROPOSED REPAIRS**

**ASPHALT REPAIRS**

- SEAMLESS SEAL COAT
- CRACK SEALING
- MILL AND REPLACE
- CUT AND PATCH
- CONCRETE REPAIRS
- CRACK/JOINT SEALING
- REMOVE AND REPLACE

**LEGEND**

- EXISTING CATCH BASIN
- INSTALL INLET FILTER
- CURB LOCATION
- DETAIL REFERENCE (SEE APPROPRIATE DETAIL SHEET)
- SIDEWALK REFERENCE (SEE SPREAD SHEET FOR DETAILS)

SCALE 1" = 40'

**ESTIMATED QUANTITIES**

**BASE BID**

|   |           |
|---|-----------|
| ASPHALT IMPROVEMENT                     | 2,000 LF  |
| CRACK SEALING                           | 2,000 SF  |
| SEAL COAT                               | 28,000 SF |
| CUT AND PATCH                           | 6 SF      |
| 1.5" MILL AND REPLACE                   | 4,400 SF  |
| 2.5" MILL AND REPLACE                   | 780 SF    |
| <b>CONCRETE IMPROVEMENTS</b>            |           |
| SIDEWALK RAMP REMOVAL AND REPLACEMENT   | 1 EA      |
| SIDEWALK REMOVAL AND REPLACEMENT        | 6.08 SF   |
| SIDEWALK CURBING                        | 0 LF      |
| SIDEWALK LEVELING                       | 4 EA      |
| CURB AND GUTTER REMOVAL AND REPLACEMENT | 33 LF     |
| <b>MECHANICAL ADJUSTMENTS</b>           |           |
| STRUCTURE ADJUSTMENT                    | 0 EA      |

**NOTE:** TYPICAL ROW WIDTHS AND ITEMS ARE SHOWN ON PLAN FOR INFORMATION TO COMPLETE REPAIRS APPROPRIATE. QUANTITIES ARE APPROXIMATE AND MAY INCREASE OR DECREASE BASED UPON FIELD CONDITIONS AT 10' INTERVALS IN LUMP SUM ITEMS. CONTRACTOR SHALL COMPLETE ALL WORK WITHIN THE DEFINED WORK AREAS FOR REPAIRS AND SPECIFICALLY MARKED OTHERWISE SHOWN ON THE PLAN AS ALLOWANCE ITEMS.

**NOTE:** INCIDENTAL CONSTRUCTION TO BE INCLUDED IN PAVEMENT REPAIRS (LUMP SUM PRICES) SHALL INCLUDE: SOIL EXPOSURE AND RESTORATION, CURBING MEASURES, AUDIO-VISUAL SURVEYS, LANDSCAPING RESTORATION, AND SIGNING (WHERE NECESSARY). APPROXIMATE LOCATIONS OF INCIDENTAL CONSTRUCTION ARE SHOWN WHERE APPLICABLE. QUANTITIES MAY INCREASE OR DECREASE WHERE FOUND NECESSARY UPON SITE REVIEW WITH DESIGN CONSULTANT.

Spalding DeDecker Associates, Inc.



Engineering Consultants  
Infrastructure - Land Development - Surveying

220 W. Congress, Suite 400  
Detroit, MI 48226  
Phone: (313) 967-4700  
Fax: (313) 967-4707

905 South Blvd. East  
Rochester Hills, MI 48307  
Phone: (248) 844-5400  
Fax: (248) 844-5404

10503 Clifton Dr., Suite 600  
Brighton, MI 48116  
Phone: (810) 934-1400  
Fax: (810) 934-1402

www.sda-eng.com

**3 WORKING DAYS BEFORE YOU DIG CALL MISS DIG. 1-800-482-7171**

**NOTE:** UTILITY INFORMATION ON THIS DRAWING MAY BE FROM INFORMATION OBTAINED TO THIS FIRM BY THE DESIGNER FROM UTILITY COMPANIES, CITY/COUNTY AGENCIES AND OTHER VARIOUS SOURCES. UNDERSTANDING UTILITIES AND OTHER PUBLIC PROPERTY ARE QUALITY CONTROLLED FROM A UTILITY COMPANY'S PROVIDED PLANS. THEIR LOCATION, DEPTH AND OTHER INFORMATION ARE APPROXIMATE FROM FIELD SURVEYS. UTILITIES NOT SHOWN ON THIS DRAWING ARE NOT SHOWN FOR INFORMATION. NO LIABILITY IS GIVEN AS TO THE COMPLETENESS OR ACCURACY THEREOF.

**NOTE:** CONSTRUCTION LOCATIONS AND DEPTHS OF EXISTING UTILITIES TO EXIST WITH PROPOSED IMPROVEMENTS SHALL BE VERIFIED IN THE FIELD. CALL FOR 1 WORKING DAYS PRIOR TO CONSTRUCTION.

**DISCLAIMER:** © 2010 SPALDING DEDECKER ASSOCIATES, INC. THIS DRAWING AND THE SUBJECT MATTER CONTAINED THEREIN IS PROPRIETARY AND IS NOT TO BE USED OR REPRODUCED WITHOUT WRITTEN PERMISSION OF SPALDING DEDECKER ASSOCIATES, INC.

**PHEASANT RUN ROADWAY MAINTENANCE ASSOCIATION**  
CANTON, MICHIGAN

2010 PAVEMENT REPAIRS  
FAIRWAYS  
PAVEMENT REPAIR PLAN  
11 OF 14

| NO. | DATE     | REVISION |
|-----|----------|----------|
| 1   | 05/12/10 | BIDS     |

| DATE     | BY           | CHKD |
|----------|--------------|------|
| 05-12-10 | E. TILWANGAS | DL   |
| 05-12-10 | E. TILWANGAS | DL   |
| 05-12-10 | E. TILWANGAS | DL   |

| PROJECT NUMBER | DATE     | SCALE    |
|----------------|----------|----------|
| NP08-010       | 05-12-10 | 1" = 40' |
| NP08-010       | 05-12-10 | 1" = 40' |

DRAWING SCALE SHOWN VALID ONLY ON "D" SIZE (24"x36") PLANS  
REDUCED PLANS PROVIDED FOR REFERENCE PURPOSES ONLY



220 W. Congress, Suite 400  
Dexter, MI 48226  
Phone: (313) 967-4700  
Fax: (313) 967-4707

905 South Blvd. East  
Rochester Hills, MI 48307  
Phone: (248) 844-5400  
Fax: (248) 844-5404

10503 Chatham Dr., Suite 600  
Brighton, MI 48116  
Phone: (810) 534-1400  
Fax: (810) 534-1402

www.sda-eng.com

**3 WORKING DAYS  
BEFORE YOU DIG  
CALL MISS DIG.  
1-800-482-7171**

NOTE: UTILITY INFORMATION ON THE DRAWING MAY BE FROM INFORMATION OBTAINED TO THE BEST OF OUR KNOWLEDGE FROM PUBLIC RECORDS, UTILITY COMPANIES, CITY/STATE AGENCIES AND OTHER VARIOUS SOURCES. UNDISCOVERED UTILITIES WHICH ARE ON PRIVATE PROPERTY ARE USUALLY NOT RELEASED UPON A UTILITY COMPANY'S FORECAST PLANS. YOUR LOCATION IS SHOWN UPON THE SURVEY. ANY APPROXIMATE FROM FINDING PARTS AND/OR UTILITIES IS NOT GUARANTEED BY THE DRAWING. ANY DISCREPANCY BETWEEN THE DRAWING AND THE ACTUAL SITUATION IS THE RESPONSIBILITY OF THE CONTRACTOR.

BEFORE CONSTRUCTION, ALL LOCATIONS AND DEPTHS OF EXISTING UTILITIES IN CONTACT WITH PROPOSED CONSTRUCTION SHALL BE VERIFIED BY THE CONTRACTOR. CALL MISS DIG 3 WORKING DAYS PRIOR TO CONSTRUCTION.

NOTE: INCIDENTAL CONSTRUCTION TO BE INCLUDED IN AN APPROPRIATE RETAIN WALL CONTRACT SHALL INCLUDE SOIL EROSION AND STABILIZATION, CURBS, MEASURES, AUTO-ROCK DRAINAGE, LANDSCAPING RESTORATION, AND STRIPING (WHICH IS NECESSARY). APPROXIMATE LOCATIONS OF INCIDENTAL CONSTRUCTION ARE SHOWN WHERE APPLICABLE. QUANTITIES WILL INCREASE OR DECREASE AS NECESSARY UPON SITE REVIEW WITH DESIGN CONSULTANT.

**PHEASANT RUN ROADWAY  
MAINTENANCE ASSOCIATION  
CANTON, MICHIGAN**

2010 PAVEMENT REPAIRS  
PHEASANT VIEW  
PAVEMENT REPAIR PLAN  
12 OF 14

| NO. | DATE     | REVISION |
|-----|----------|----------|
| 1   | 05/12/10 | BIDS     |

| NO. | DATE     | BY |
|-----|----------|----|
| 1   | 05-23-10 | JL |
| 2   | 06-23-10 | JL |
| 3   | 06-23-10 | JL |

| NO. | DATE     | BY |
|-----|----------|----|
| 1   | 05-23-10 | JL |
| 2   | 06-23-10 | JL |
| 3   | 06-23-10 | JL |

**PROPOSED REPAIRS**

| ASPHALT REPAIRS | DESCRIPTION          |
|-----------------|----------------------|
| [Pattern]       | BITUMINOUS SEAL COAT |
| [Pattern]       | CRACK SEALING        |
| [Pattern]       | MILL AND REPLACE     |
| [Pattern]       | CUT AND PATCH        |
| [Pattern]       | CONCRETE REPAIRS     |
| [Pattern]       | CRACK/JOINT SEALING  |
| [Pattern]       | REMOVE AND REPLACE   |

**LEGEND**

|          |  |
|----------|--|
| [Symbol] | EXISTING CATCH BASIN                             |
| [Symbol] | INSTALL INLET PILE                               |
| [Symbol] | EDGE LOCATION                                    |
| [Symbol] | DETAIL REFERENCE (SEE APPROPRIATE DETAIL SHEET)  |
| [Symbol] | GENERAL REFERENCE (SEE SPREAD SHEET FOR DETAILS) |

**ESTIMATED QUANTITIES**

| BASE BID                                | QUANTITY  |
|---|-----------|
| ASPHALT IMPROVEMENTS                    | 1,400 LF  |
| CRACK SEALING                           | 22,850 SF |
| SEAL COAT                               | 22,850 SF |
| CUT AND PATCH                           | 0 SF      |
| 1.5" MILL AND REPLACE                   | 0 SF      |
| 2.5" MILL AND REPLACE                   | 1,171 SF  |
| CONCRETE IMPROVEMENTS                   |           |
| SPECIALTY CURB REMOVAL AND REPLACEMENT  | 2 EA      |
| SPECIALTY SEWALIN AND REPLACEMENT       | 100 SF    |
| SPECIALTY CURBING                       | 0 LF      |
| SPECIALTY LEVELING                      | 0 LF      |
| CURB AND GUTTER REMOVAL AND REPLACEMENT | 0 LF      |
| INCIDENTAL IMPROVEMENTS                 | 0 EA      |
| STRUCTURE ADJUSTMENT                    | 0 EA      |
| ALTERNATE #1077                         |           |
| ASPHALT IMPROVEMENTS                    | 4,500 SF  |
| 1.5" MILL AND REPLACE                   |           |

NOTE: PAVEMENT REPAIR AREAS ARE SHOWN ON PLAN FOR CONTRACTOR TO CONDUCT PRELIMINARY INVESTIGATION. QUANTITIES ARE APPROXIMATE AND MAY INCREASE OR DECREASE BASED UPON FIELD CONDITIONS. ALL WORK SHALL BE PERFORMED IN ACCORDANCE WITH THE SPECIFICATIONS AND STANDARD DRAWINGS FOR PAVEMENT AND STRUCTURES UNLESS OTHERWISE SPECIFIED BY THE DRAWING OR OTHERWISE NOTED.

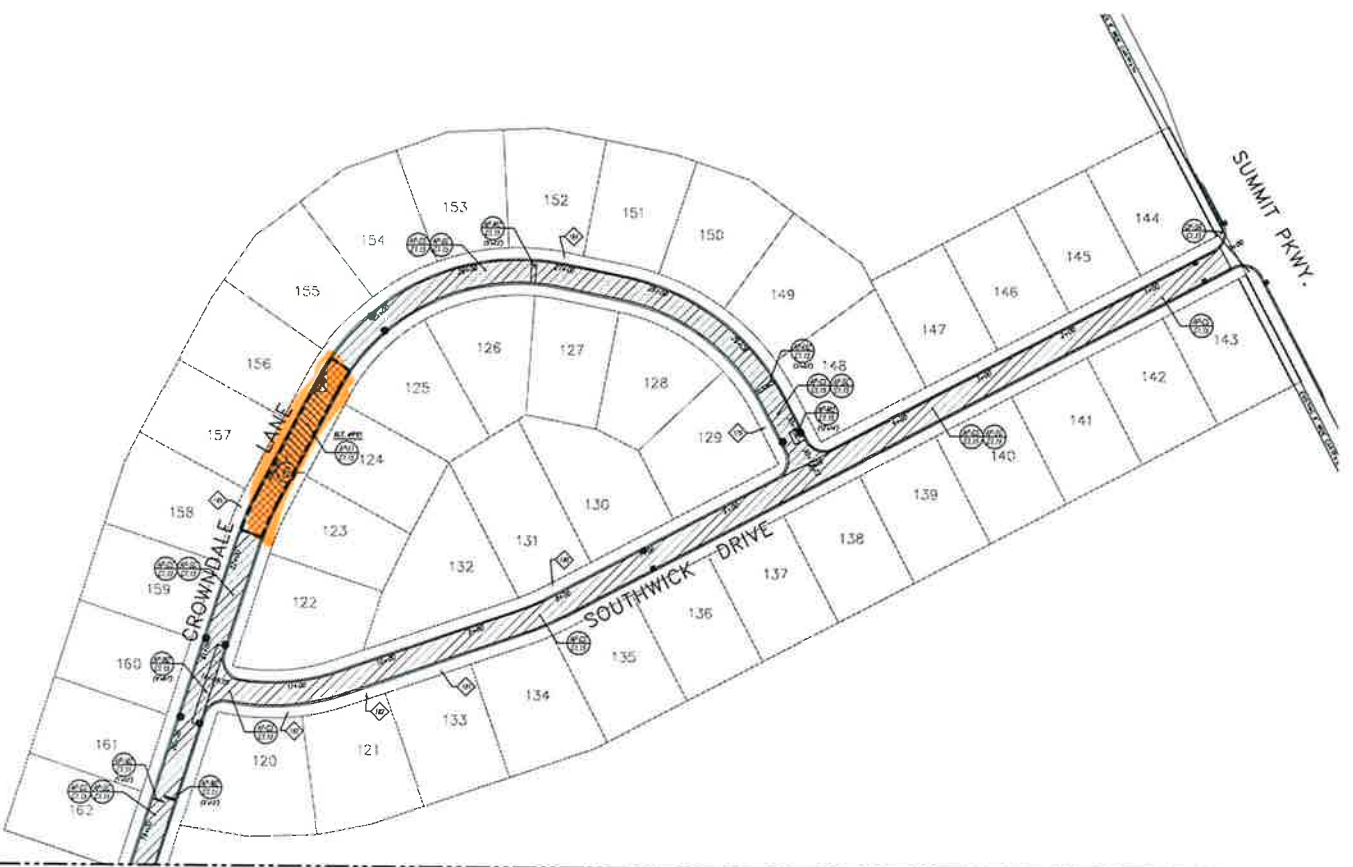
NOTE: INCIDENTAL CONSTRUCTION TO BE INCLUDED IN AN APPROPRIATE RETAIN WALL CONTRACT SHALL INCLUDE SOIL EROSION AND STABILIZATION, CURBS, MEASURES, AUTO-ROCK DRAINAGE, LANDSCAPING RESTORATION, AND STRIPING (WHICH IS NECESSARY). APPROXIMATE LOCATIONS OF INCIDENTAL CONSTRUCTION ARE SHOWN WHERE APPLICABLE. QUANTITIES WILL INCREASE OR DECREASE AS NECESSARY UPON SITE REVIEW WITH DESIGN CONSULTANT.

NOTE: UTILITY INFORMATION ON THE DRAWING MAY BE FROM INFORMATION OBTAINED TO THE BEST OF OUR KNOWLEDGE FROM PUBLIC RECORDS, UTILITY COMPANIES, CITY/STATE AGENCIES AND OTHER VARIOUS SOURCES. UNDISCOVERED UTILITIES WHICH ARE ON PRIVATE PROPERTY ARE USUALLY NOT RELEASED UPON A UTILITY COMPANY'S FORECAST PLANS. YOUR LOCATION IS SHOWN UPON THE SURVEY. ANY APPROXIMATE FROM FINDING PARTS AND/OR UTILITIES IS NOT GUARANTEED BY THE DRAWING. ANY DISCREPANCY BETWEEN THE DRAWING AND THE ACTUAL SITUATION IS THE RESPONSIBILITY OF THE CONTRACTOR.

BEFORE CONSTRUCTION, ALL LOCATIONS AND DEPTHS OF EXISTING UTILITIES IN CONTACT WITH PROPOSED CONSTRUCTION SHALL BE VERIFIED BY THE CONTRACTOR. CALL MISS DIG 3 WORKING DAYS PRIOR TO CONSTRUCTION.

NOTE: INCIDENTAL CONSTRUCTION TO BE INCLUDED IN AN APPROPRIATE RETAIN WALL CONTRACT SHALL INCLUDE SOIL EROSION AND STABILIZATION, CURBS, MEASURES, AUTO-ROCK DRAINAGE, LANDSCAPING RESTORATION, AND STRIPING (WHICH IS NECESSARY). APPROXIMATE LOCATIONS OF INCIDENTAL CONSTRUCTION ARE SHOWN WHERE APPLICABLE. QUANTITIES WILL INCREASE OR DECREASE AS NECESSARY UPON SITE REVIEW WITH DESIGN CONSULTANT.

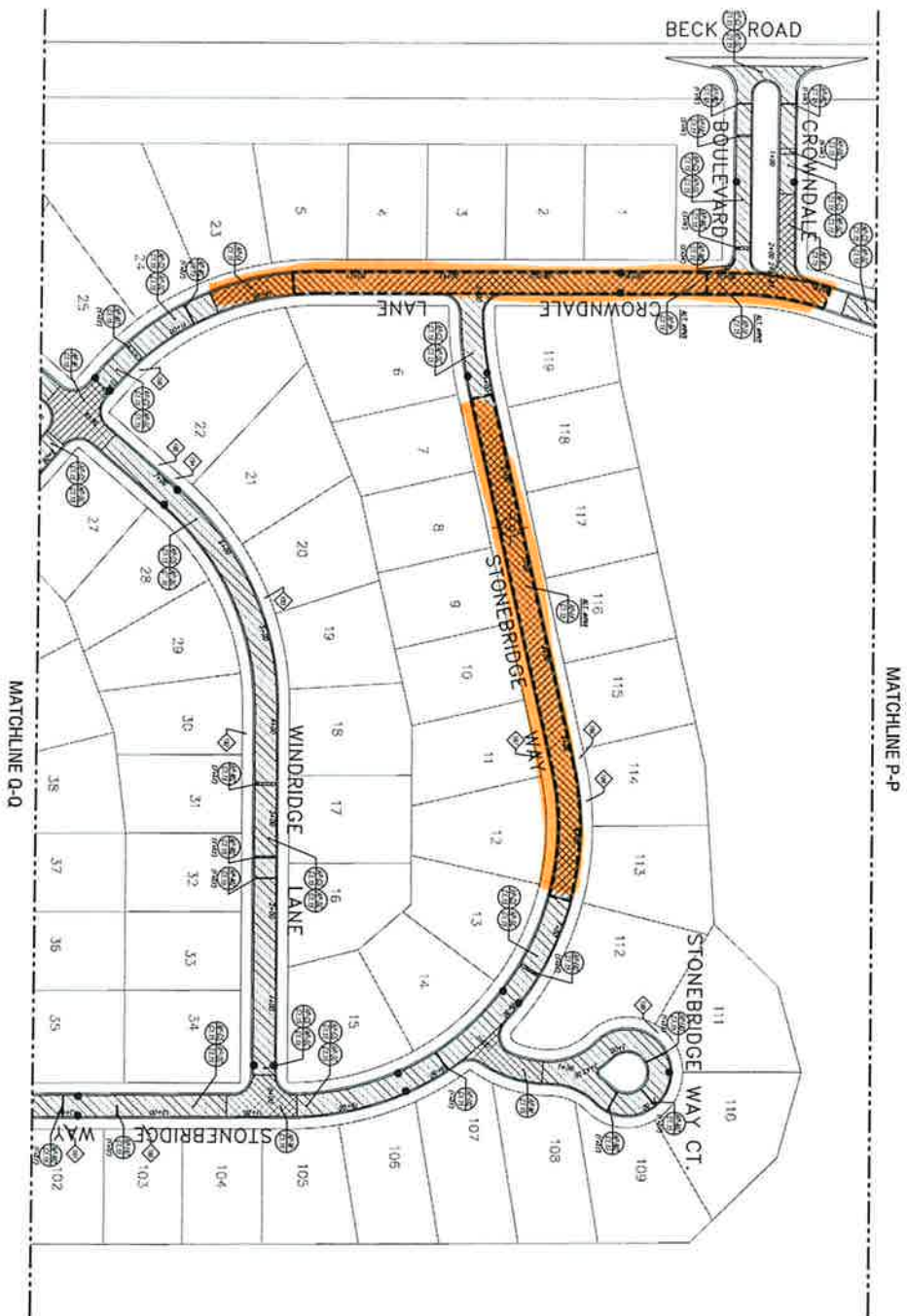
DRAWING SCALE SHOWN VALID ONLY ON "D" SIZE (24"x36") PLANS  
REDUCED PLANS PROVIDED FOR REFERENCE PURPOSES ONLY



MATCHLINE P-P

THIS IS ONE COPY OF ORIGINAL DRAWING  
IF NOT ONE COPY ON THIS SHEET,  
ADDITIONAL COPIES ARE REQUIRED.

NO. NP09-010  
SCALE 1" = 60'



MATCHLINE P-P

MATCHLINE Q-Q



SCALE 1" = 40'

| PROPOSED SURFACES |                |
|-------------------|----------------|
|                   | ASPHALT/GRAVEL |
|                   | CONCRETE       |
|                   | GRAVEL         |
|                   | SAND           |
|                   | STONE          |
|                   | BRICK          |
|                   | COBBLE         |
|                   | PAVERS         |
|                   | INTERLOCKING   |
|                   | CONCRETE SLAB  |
|                   | ASPHALT SLAB   |

| LEGEND |                     |
|--------|---------------------|
|        | EXISTING CITY BLOCK |
|        | UTILITY MARK        |
|        | OAK LOCATION        |
|        | TREE LOCATION       |
|        | UTILITY MARK        |
|        | TREE LOCATION       |

**3 MONTHS DATA BEFORE YOU DIG CALL MISSOURI 1-800-485-2711**

**SPALDING DETACKER ASSOCIATES, INC.**  
 2011 N. Gateway, Suite 400  
 Denver, CO 80202  
 Phone: (303) 756-4700  
 Fax: (303) 756-4701  
 8001 South York Street, Suite 400  
 Greenwood Village, CO 80120  
 Phone: (303) 844-5400  
 Fax: (303) 844-5404  
 10000 E. Hampden Avenue, Suite 400  
 Denver, CO 80231  
 Phone: (303) 534-1100  
 Fax: (303) 534-1022  
 www.sda-inc.com

| ESTIMATED QUANTITIES |           |
|----------------------|-----------|
| ASPHALT/GRAVEL       | 2,500 SF  |
| CONCRETE             | 1,500 SF  |
| GRAVEL               | 10,000 SF |
| SAND                 | 5,000 SF  |
| STONE                | 10,000 SF |
| BRICK                | 10,000 SF |
| COBBLE               | 10,000 SF |
| PAVERS               | 10,000 SF |
| INTERLOCKING         | 10,000 SF |
| CONCRETE SLAB        | 10,000 SF |
| ASPHALT SLAB         | 10,000 SF |

**3010 PHEASANT RIDGE PRESIDENT NEW PAVEMENT REPAIR PLAN 13 OF 14**

**PHEASANT RUN ROADWAY MAINTENANCE ASSOCIATION**  
 CANYON, MISSOURI

| NO. | DATE     | REVISION |
|-----|----------|----------|
| 1   | 05/12/10 | ISS      |

DRAWING SCALE SHOWN VALID ONLY ON 'D' SHEET (24"X36") PLANS  
 REDUCED PLANS PROVIDED FOR REFERENCE PURPOSES ONLY

