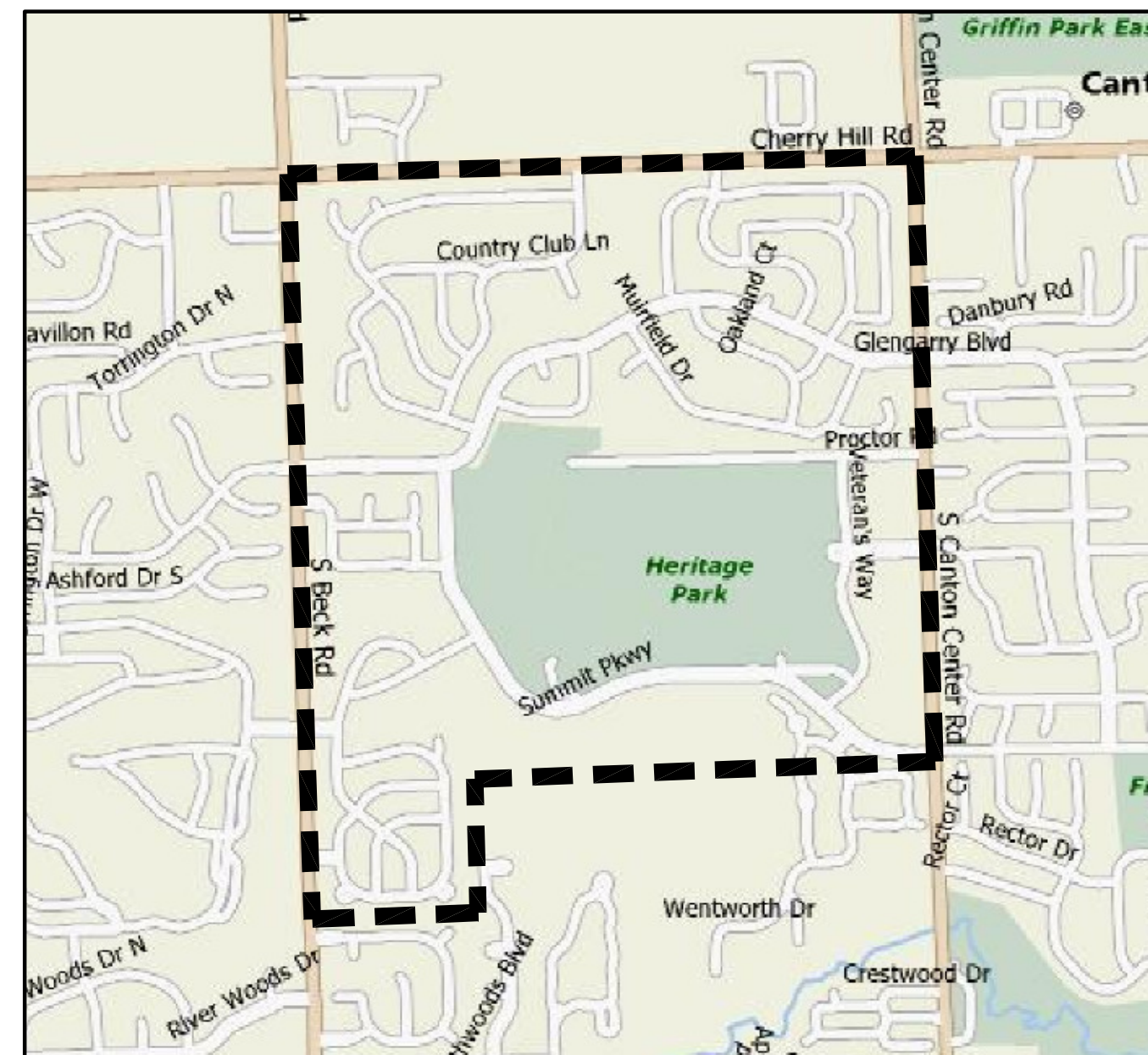


2010 PAVEMENT REPAIR PLAN*

PHEASANT RUN ROADWAY MAINTENANCE ASSOCIATION

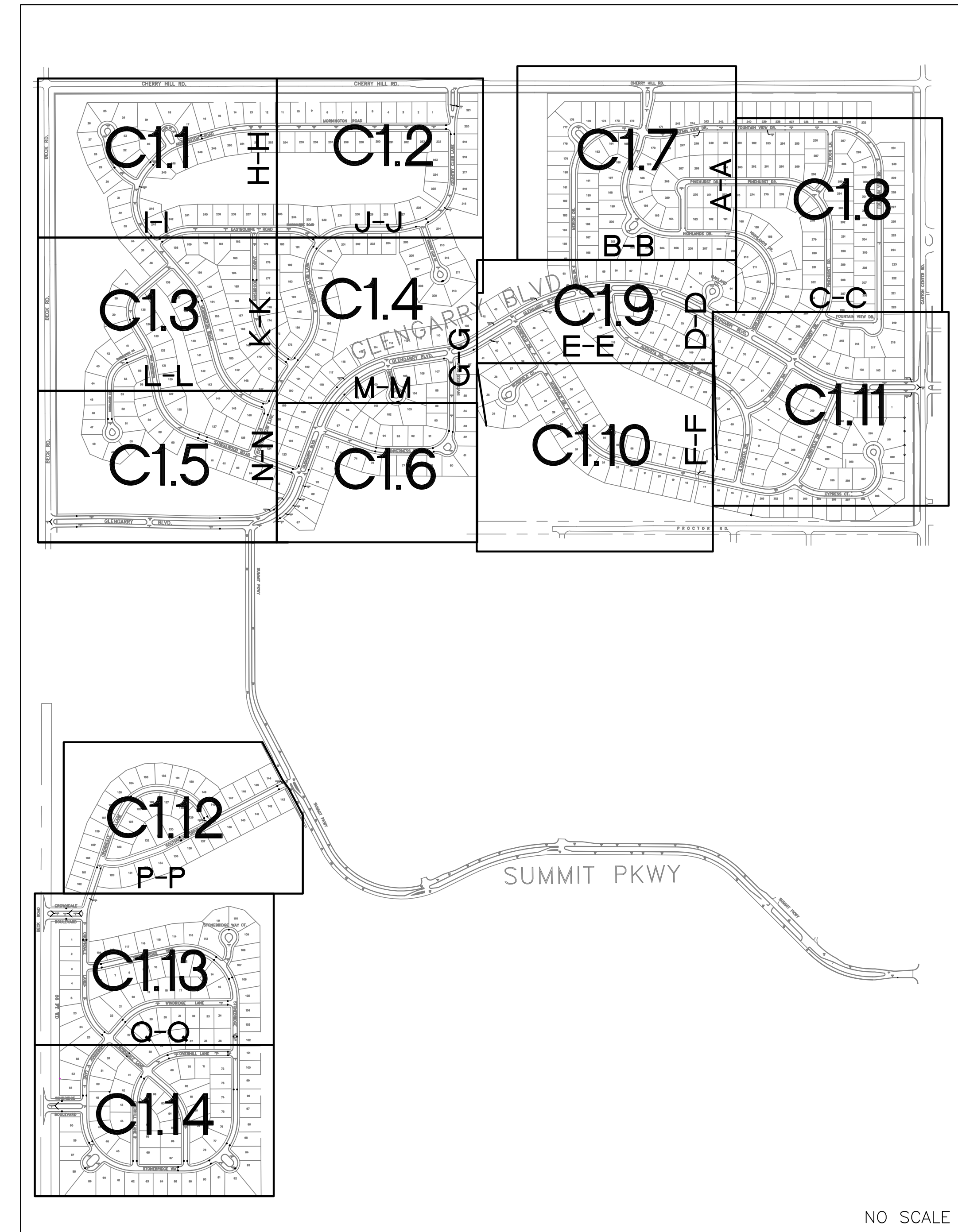
CANTON TOWNSHIP, MICHIGAN



LOCATION MAP
NO SCALE

SHEET INDEX

- C1.0 - COVER SHEET
- C1.1 - PAVEMENT REPAIR PLAN 1 OF 14
- C1.2 - PAVEMENT REPAIR PLAN 2 OF 14
- C1.3 - PAVEMENT REPAIR PLAN 3 OF 14
- C1.4 - PAVEMENT REPAIR PLAN 4 OF 14
- C1.5 - PAVEMENT REPAIR PLAN 5 OF 14
- C1.6 - PAVEMENT REPAIR PLAN 6 OF 14
- C1.7 - PAVEMENT REPAIR PLAN 7 OF 14
- C1.8 - PAVEMENT REPAIR PLAN 8 OF 14
- C1.9 - PAVEMENT REPAIR PLAN 9 OF 14
- C1.10 - PAVEMENT REPAIR PLAN 10 OF 14
- C1.11 - PAVEMENT REPAIR PLAN 11 OF 14
- C1.12 - PAVEMENT REPAIR PLAN 12 OF 14
- C1.13 - PAVEMENT REPAIR PLAN 13 OF 14
- C1.14 - PAVEMENT REPAIR PLAN 14 OF 14
- C1.15 - PAVEMENT REPAIR DETAILS
- C1.16 - GENERAL NOTES



NO SCALE

OWNER
PHEASANT RUN ROADWAY MAINTENANCE ASSOCIATION
CANTON TOWNSHIP, MICHIGAN

ENGINEER
SPALDING DeDECKER ASSOCIATES, INC.
905 SOUTH BOULEVARD EAST
ROCHESTER HILLS, MICHIGAN 48307
PHONE (248) 844-5400 FAX (248) 844-5404

*IMPROVEMENTS ON THIS PLAN REFER TO SPALDING DEDECKER ASSOCIATES PAVEMENT MANAGEMENT REPORT, DATED MARCH 2009 TO JUNE 2009, FOR YEAR 2 OF THE 10 YEAR CAPITAL IMPROVEMENT PROGRAM

Spalding DeDecker
Associates, Inc.



Engineering Consultants
Infrastructure • Land Development • Surveying

SPALDING DeDECKER ASSOCIATES, INC.
ENGINEERS SURVEYORS
ROCHESTER HILLS, MICHIGAN